

Product Name: CrkL Rabbit Monoclonal Antibody**Catalog #: AMRe02952**

For research use only.

Summary

Description	Recombinant rabbit monoclonal antibody
Host	Rabbit
Application	WB, ICC/IF
Reactivity	Human
Conjugation	Unconjugated
Modification	Unmodified
Isotype	IgG
Clonality	Monoclonal
Form	Liquid
Concentration	0.63mg/ml. The concentration of this product may be batch-dependent.
Storage	Aliquot and store at -20°C (valid for 12 months). Avoid freeze/thaw cycles.
Shipping	Ice bags
Buffer	50mM Tris-Glycine(pH 7.4), 0.15M NaCl, 40% Glycerol, 0.01% Sodium azide and 0.05% protective protein
Purification	Affinity Purification

Application

Dilution Ratio	WB 1:500-1:1000, ICC/IF 1:50-1:200
Molecular Weight	Calculated MW: 34 kDa; Observed MW: 39 kDa

Antigen Information

Gene Name	CRKL
Alternative Names	Crk L; Crk like protein; Crkl; Crkol
Gene ID	1399
SwissProt ID	P46109
Immunogen	A synthetic peptide corresponding to target protein

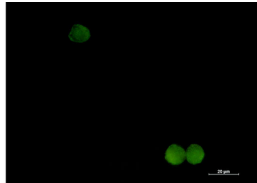
Background

May mediate the transduction of intracellular signals.

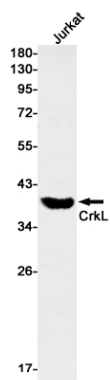
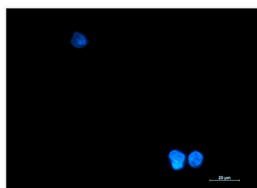
Research Area

Neuroscience

Image Data



Immunocytochemistry analysis of CrkL (green) in K562 using CrkL antibody, and DAPI (blue).



Western blot analysis of CrkL in Jurkat lysates using CrkL antibody.