
Product Name: CLIP170 Rabbit Monoclonal Antibody**Catalog #: AMRe02947**

For research use only.

Summary

Description	Recombinant rabbit monoclonal antibody
Host	Rabbit
Application	WB,IHC,ICC/IF,IP
Reactivity	Human
Conjugation	Unconjugated
Modification	Unmodified
Isotype	IgG
Clonality	Monoclonal
Form	Liquid
Concentration	0.51mg/ml. The concentration of this product may be batch-dependent.
Storage	Aliquot and store at -20°C (valid for 12 months). Avoid freeze/thaw cycles.
Shipping	Ice bags
Buffer	50mM Tris-Glycine(pH 7.4), 0.15M NaCl, 40% Glycerol, 0.01% Sodium azide and 0.05% protective protein
Purification	Affinity Purification

Application

Dilution Ratio	WB 1:500-1:1000,IHC 1:50-1:100,ICC/IF 1:50-1:200,IP 1:20-1:50
Molecular Weight	Calculated MW: 162 kDa; Observed MW: 170 kDa

Antigen Information

Gene Name	CLIP1
Alternative Names	RSN; CLIP; CYLN1; CLIP170; CLIP-170
Gene ID	6249
SwissProt ID	P30622
Immunogen	A synthetic peptide of human CLIP170

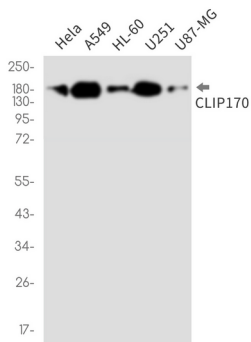
Background

Binds to the plus end of microtubules and regulates the dynamics of the microtubule cytoskeleton.

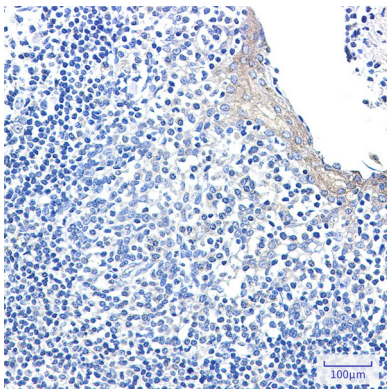
Research Area

Cell Biology

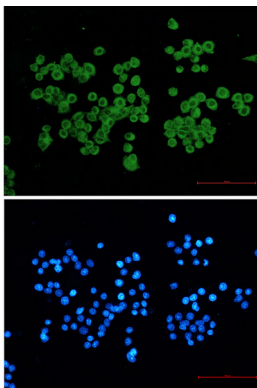
Image Data



Western blot analysis of CLIP170 in HeLa, A549, HL-60, U251, U87-MG lysates using CLIP170 antibody.



Immunohistochemistry analysis of paraffin-embedded Human tonsil using CLIP170 antibody. High-pressure and temperature Sodium Citrate pH 6.0 was used for antigen retrieval.



Immunocytochemistry analysis of CLIP17 (green) in HeLa cells using CLIP170 antibody and DAPI (blue).