

**Product Name: Caspase 6 Rabbit Monoclonal Antibody**  
**Catalog #: AMRe02927**



---

## Summary

<b>Production Name</b>	Caspase 6 Rabbit Monoclonal Antibody
<b>Description</b>	Rabbit Monoclonal antibody
<b>Host</b>	Rabbit
<b>Application</b>	WB,IHC-P
<b>Reactivity</b>	Human

## Performance

<b>Conjugation</b>	Unconjugated
<b>Modification</b>	Unmodified
<b>Isotype</b>	IgG
<b>Clonality</b>	Monoclonal
<b>Form</b>	Liquid
<b>Storage</b>	Store at 4°C short term. Aliquot and store at -20°C long term. Avoid freeze/thaw cycles.
<b>Buffer</b>	50mM Tris-Glycine(pH 7.4), 0.15M NaCl, 40% Glycerol, 0.01% Sodium azide and 0.05% protective protein
<b>Purification</b>	Affinity Purification

## Immunogen

<b>Gene Name</b>	CASP6
<b>Alternative Names</b>	CASP6; MCH2; Caspase-6; CASP-6; Apoptotic protease Mch-2
<b>Gene ID</b>	839
<b>SwissProt ID</b>	P55212.

## Application

<b>Dilution Ratio</b>	WB: 1:500-1:1000 IHC: 1:50-1:100
<b>Molecular Weight</b>	Calculated MW: 33 kDa; Observed MW: 11,33 kDa

## Background

---

**Product Name: Caspase 6 Rabbit Monoclonal Antibody**  
**Catalog #: AMRe02927**

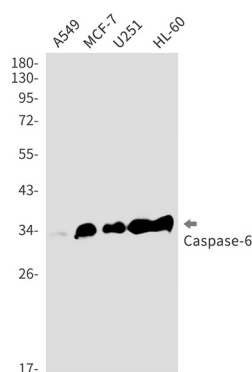


Caspase-6 (Mch2) is one of the major executioner caspases functioning in cellular apoptotic processes. Upon apoptotic stimulation, initiator caspases such as caspase-9 are cleaved and activated. The activated upstream caspases further process downstream executioner caspases, such as caspase-3 and caspase-6, by cleaving them into large and small subunits, thereby initiating a caspase cascade leading to apoptosis. One of the major targets for caspase-6 is the membrane associated protein lamin A.

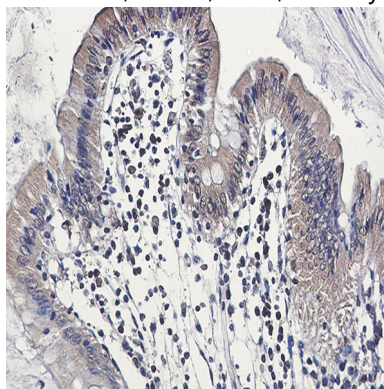
## Research Area

Cell Biology

## Image Data



Western blot analysis of Caspase6 in A549, MCF-7, U251, HL-60 lysates using Caspase 6 antibody.



Immunohistochemistry analysis of paraffin-embedded Human colon cancer using Caspase6 antibody. High-pressure and temperature Sodium Citrate pH 6.0 was used for antigen retrieval.

## Note

For research use only.