
Product Name: Casein Kinase 2 beta Rabbit Monoclonal Antibody**Catalog #: AMRe02926**

For research use only.

Summary

Description	Recombinant rabbit monoclonal antibody
Host	Rabbit
Application	WB,IHC,ICC/IF
Reactivity	Human,Mouse,Rat
Conjugation	Unconjugated
Modification	Unmodified
Isotype	IgG
Clonality	Monoclonal
Form	Liquid
Concentration	0.39mg/ml. The concentration of this product may be batch-dependent.
Storage	Aliquot and store at -20°C (valid for 12 months). Avoid freeze/thaw cycles.
Shipping	Ice bags
Buffer	50mM Tris-Glycine(pH 7.4), 0.15M NaCl, 40% Glycerol, 0.01% Sodium azide and 0.05% protective protein
Purification	Affinity Purification

Application

Dilution Ratio	WB 1:500-1:1000,IHC 1:50-1:100,ICC/IF 1:50-1:200
Molecular Weight	Calculated MW: 25 kDa; Observed MW: 25 kDa

Antigen Information

Gene Name	CSNK2B
Alternative Names	CSNK2B; CK2N; G5A; Casein kinase II subunit beta; CK II beta; Phosvitin; Protein G5a
Gene ID	1460
SwissProt ID	P67870
Immunogen	A synthetic peptide of human Casein Kinase 2 beta

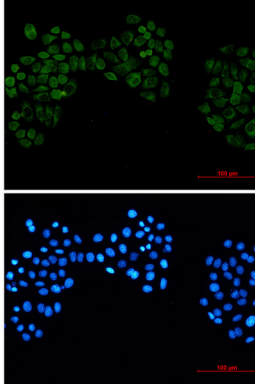
Background

Participates in Wnt signaling (By similarity). Plays a complex role in regulating the basal catalytic activity of the alpha subunit.

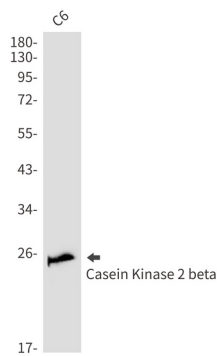
Research Area

Cell Biology

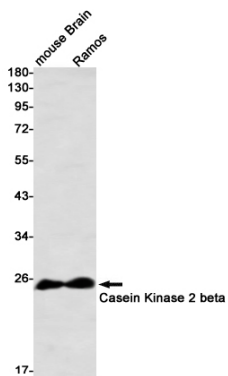
Image Data



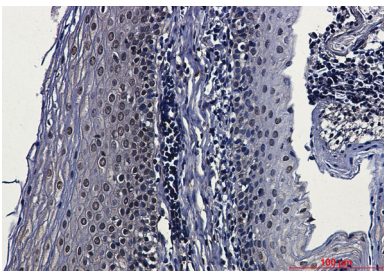
Immunocytochemistry analysis of Casein Kinase 2 beta (green) in HeLa using Casein Kinase 2 beta antibody, and DAPI (blue).



Western blot analysis of Casein Kinase 2 beta in C6 lysates using Casein Kinase 2 beta antibody.



Western blot analysis of Casein Kinase 2 beta in mouse Brain, Ramos lysates using Casein Kinase 2 beta antibody



Immunohistochemistry analysis of paraffin-embedded Human tonsil using Casein Kinase 2 beta antibody. High-pressure and temperature Sodium Citrate pH 6.0 was used for antigen retrieval.