

**Product Name: Calcineurin A Rabbit Monoclonal Antibody****Catalog #: AMRe02922**

For research use only.

**Summary**

<b>Description</b>	Recombinant rabbit monoclonal antibody
<b>Host</b>	Rabbit
<b>Application</b>	WB,IP
<b>Reactivity</b>	Human,Mouse,Rat
<b>Conjugation</b>	Unconjugated
<b>Modification</b>	Unmodified
<b>Isotype</b>	IgG
<b>Clonality</b>	Monoclonal
<b>Form</b>	Liquid
<b>Concentration</b>	0.63mg/ml. The concentration of this product may be batch-dependent.
<b>Storage</b>	Aliquot and store at -20°C (valid for 12 months). Avoid freeze/thaw cycles.
<b>Shipping</b>	Ice bags
<b>Buffer</b>	50mM Tris-Glycine(pH 7.4), 0.15M NaCl, 40% Glycerol, 0.01% Sodium azide and 0.05% protective protein
<b>Purification</b>	Affinity Purification

**Application**

<b>Dilution Ratio</b>	WB 1:500-1:1000,IP 1:20-1:50
<b>Molecular Weight</b>	Calculated MW: 59 kDa; Observed MW: 59 kDa

**Antigen Information**

<b>Gene Name</b>	PPP3CA PPP3CA; CALNA; CNA; Serine/threonine-protein phosphatase 2B catalytic subunit alpha
<b>Alternative Names</b>	isoform; CAM-PRP catalytic subunit; Calmodulin-dependent calcineurin A subunit alpha isoform
<b>Gene ID</b>	5530
<b>SwissProt ID</b>	Q08209
<b>Immunogen</b>	A synthetic peptide of human Calcineurin A

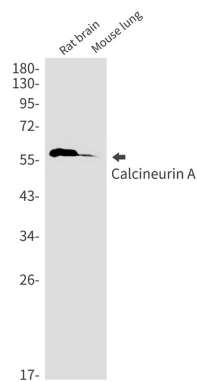
**Background**

Calcineurin, also known as protein phosphatase 2B (PP2B), is a calmodulin-dependent, calcium-activated, serine/threonine protein phosphatase composed of a catalytic subunit (calcineurin A) and a tightly bound regulatory subunit (calcineurin B). Calcium-dependent, calmodulin-stimulated protein phosphatase. This subunit may have a role in the calmodulin activation of calcineurin. Dephosphorylates DNM1L, HSPB1 and SSH1.

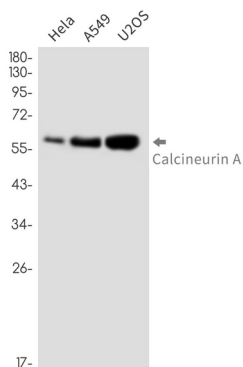
## Research Area

Immunology

## Image Data



Western blot analysis of Calcineurin A in rat brain, mouse lung lysates using Calcineurin A antibody.



Western blot analysis of Calcineurin A in HeLa, A549, U2OS lysates using Calcineurin A antibody.