

**Product Name: Bcr Rabbit Monoclonal Antibody****Catalog #: AMRe02912**

For research use only.

**Summary**

<b>Description</b>	Recombinant rabbit monoclonal antibody
<b>Host</b>	Rabbit
<b>Application</b>	WB,IHC,IP
<b>Reactivity</b>	Human,Rat
<b>Conjugation</b>	Unconjugated
<b>Modification</b>	Unmodified
<b>Isotype</b>	IgG
<b>Clonality</b>	Monoclonal
<b>Form</b>	Liquid
<b>Concentration</b>	0.63mg/ml. The concentration of this product may be batch-dependent.
<b>Storage</b>	Aliquot and store at -20°C (valid for 12 months). Avoid freeze/thaw cycles.
<b>Shipping</b>	Ice bags
<b>Buffer</b>	50mM Tris-Glycine(pH 7.4), 0.15M NaCl, 40% Glycerol, 0.01% Sodium azide and 0.05% protective protein
<b>Purification</b>	Affinity Purification

**Application**

<b>Dilution Ratio</b>	WB 1:500-1:1000,IHC 1:50-1:100,IP 1:20-1:50
<b>Molecular Weight</b>	Calculated MW: 143 kDa; Observed MW: 160 kDa

**Antigen Information**

<b>Gene Name</b>	BCR
<b>Alternative Names</b>	ALL; CML; PHL; BCR1; D22S11; D22S662
<b>Gene ID</b>	613
<b>SwissProt ID</b>	P11274
<b>Immunogen</b>	A synthetic peptide corresponding to target protein

**Background**

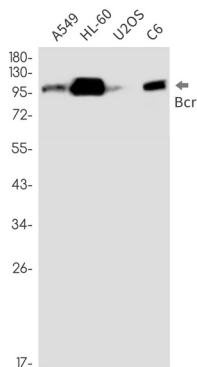
A reciprocal translocation between chromosomes 22 and 9 produces the Philadelphia chromosome, which is often found in patients with chronic myelogenous leukemia. The chromosome 22 breakpoint for this translocation is located within the BCR

gene. The translocation produces a fusion protein which is encoded by sequence from both BCR and ABL, the gene at the chromosome 9 breakpoint. Although the BCR-ABL fusion protein has been extensively studied, the function of the normal BCR gene product is not clear. The unregulated tyrosine kinase activity of BCR-ABL1 contributes to the immortality of leukaemic cells. The BCR protein has serine/threonine kinase activity and is a GTPase-activating protein for p21rac and other kinases. Two transcript variants encoding different isoforms have been found for this gene.[provided by RefSeq, Jan 2020]

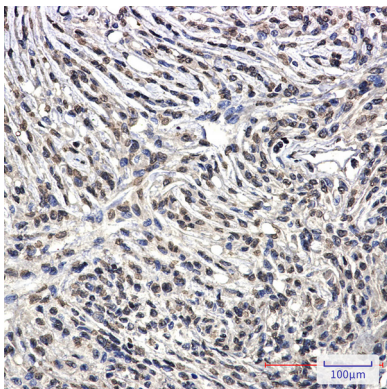
## Research Area

Signal Transduction

## Image Data



Western blot analysis of Bcr in A549, HL-60, U2OS, C6 lysates using Bcr antibody.



Immunohistochemistry analysis of paraffin-embedded Human Brain using Bcr antibody. High-pressure and temperature Sodium Citrate pH 6.0 was used for antigen retrieval.