
Product Name: ATG10 Rabbit Monoclonal Antibody**Catalog #: AMRe02906**

For research use only.

Summary

Description	Recombinant rabbit monoclonal antibody
Host	Rabbit
Application	WB,IP
Reactivity	Human
Conjugation	Unconjugated
Modification	Unmodified
Isotype	IgG
Clonality	Monoclonal
Form	Liquid
Concentration	0.5mg/ml. The concentration of this product may be batch-dependent.
Storage	Aliquot and store at -20°C (valid for 12 months). Avoid freeze/thaw cycles.
Shipping	Ice bags
Buffer	50mM Tris-Glycine(pH 7.4), 0.15M NaCl, 40% Glycerol, 0.01% Sodium azide and 0.05% protective protein
Purification	Affinity Purification

Application

Dilution Ratio	WB 1:500-1:1000,IP 1:20-1:50
Molecular Weight	Calculated MW: 25 kDa; Observed MW: 25 kDa

Antigen Information

Gene Name	ATG10
Alternative Names	autophagy related 10; APG10; APG10L; pp12616
Gene ID	83734
SwissProt ID	Q9H0Y0
Immunogen	A synthetic peptide of human ATG10

Background

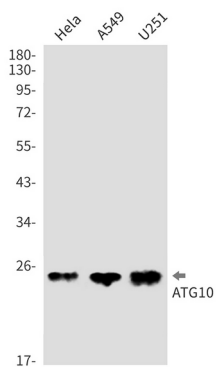
E2-like enzyme involved in autophagy. Acts as an E2-like enzyme that catalyzes the conjugation of ATG12 to ATG5. ATG12 conjugation to ATG5 is required for autophagy. Likely serves as an ATG5-recognition molecule. Not involved in ATG12

conjugation to ATG3 (By similarity). Plays a role in adenovirus-mediated cell lysis.

Research Area

Cell Biology

Image Data



Western blot analysis of ATG10 in HeLa, A549, U251 lysates using ATG10 antibody.