

**Product Name: APLP2 Rabbit Monoclonal antibody**  
**Catalog #: AMRe02901**



## Summary

<b>Production Name</b>	APLP2 Rabbit Monoclonal antibody
<b>Description</b>	Recombinant Rabbit Monoclonal antibody
<b>Host</b>	Rabbit
<b>Application</b>	WB
<b>Reactivity</b>	Human,Rat

## Performance

<b>Conjugation</b>	Unconjugated
<b>Modification</b>	Unmodified
<b>Isotype</b>	IgG
<b>Clonality</b>	Monoclonal Antibody
<b>Form</b>	Liquid
<b>Storage</b>	Store at 4°C short term. Aliquot and store at -20°C long term. Avoid freeze/thaw cycles.
<b>Buffer</b>	50mM Tris-Glycine(pH 7.4), 0.15M NaCl, 40% Glycerol, 0.01% Sodium azide and 0.05% protective protein
<b>Purification</b>	Affinity Purified

## Immunogen

<b>Gene Name</b>	APLP2
<b>Alternative Names</b>	APLP2; APPL2; Amyloid-like protein 2; APLP-2; APPH; Amyloid protein homolog; CDEI box-binding protein; CDEBP
<b>Gene ID</b>	334
<b>SwissProt ID</b>	Q06481.

## Application

<b>Dilution Ratio</b>	WB: 1:500-1:1000
<b>Molecular Weight</b>	Calculated MW: 87 kDa; Observed MW: 115 kDa

**Product Name: APLP2 Rabbit Monoclonal antibody**  
**Catalog #: AMRe02901**



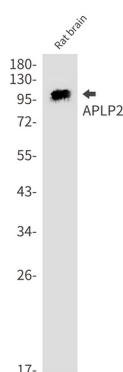
## Background

May play a role in the regulation of hemostasis. The soluble form may have inhibitory properties towards coagulation factors. May interact with cellular G-protein signaling pathways. May bind to the DNA 5'-GTCACATG-3'(CDEI box).

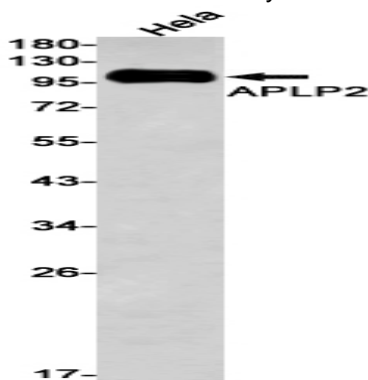
## Research Area

Neuroscience

## Image Data



Western blot analysis of APLP2 in rat brain lysates using APLP2 antibody.



Western blot analysis of APLP2 in HeLa lysates using APLP2 antibody.

## Note

For research use only.