
Product Name: alpha Internexin Rabbit Monoclonal Antibody**Catalog #: AMRe02895**

For research use only.

Summary

Description	Recombinant rabbit monoclonal antibody
Host	Rabbit
Application	WB,IHC,ICC/IF,IP
Reactivity	Human,Mouse,Rat
Conjugation	Unconjugated
Modification	Unmodified
Isotype	IgG
Clonality	Monoclonal
Form	Liquid
Concentration	0.39mg/ml. The concentration of this product may be batch-dependent.
Storage	Aliquot and store at -20°C (valid for 12 months). Avoid freeze/thaw cycles.
Shipping	Ice bags
Buffer	50mM Tris-Glycine(pH 7.4), 0.15M NaCl, 40% Glycerol, 0.01% Sodium azide and 0.05% protective protein
Purification	Affinity Purification

Application

Dilution Ratio	WB 1:500-1:1000,IHC 1:50-1:100,ICC/IF 1:50-1:200,IP 1:20-1:50
Molecular Weight	Calculated MW: 55 kDa; Observed MW: 55 kDa

Antigen Information

Gene Name	INA
Alternative Names	INA; NEF5; Alpha-internexin; Alpha-Inx; 66 kDa neurofilament protein; NF-66; Neurofilament-66; Neurofilament 5
Gene ID	9118
SwissProt ID	Q16352
Immunogen	A synthetic peptide of human alpha Internexin

Background

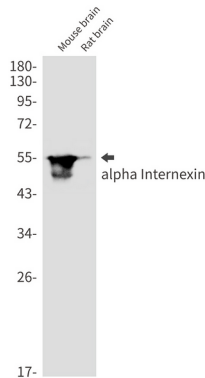
Class-IV neuronal intermediate filament that is able to self-assemble. It is involved in the morphogenesis of neurons. It may

form an independent structural network without the involvement of other neurofilaments or it may cooperate with NF-L to form the filamentous backbone to which NF-M and NF-H attach to form the cross-bridges.

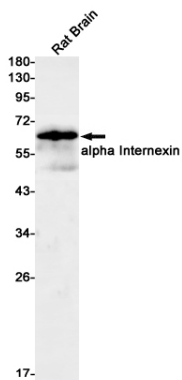
Research Area

Cell Biology

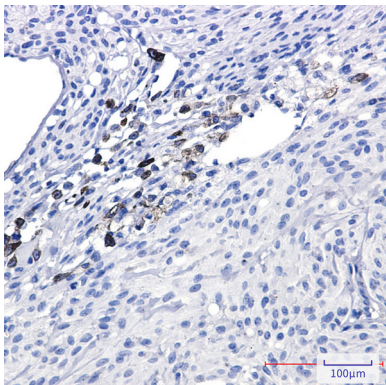
Image Data



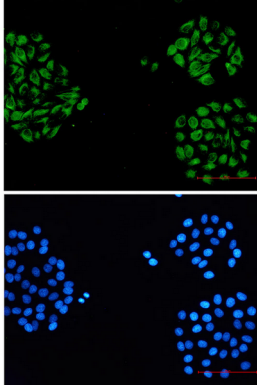
Western blot analysis of alpha Internexin in mouse brain, rat brain lysates using alpha Internexin antibody.



Western blot analysis of alpha Internexin in rat Brain lysates using alpha Internexin antibody.



Immunohistochemistry analysis of paraffin-embedded Human Brain using alpha Internexin antibody. High-pressure and temperature Sodium Citrate pH 6.0 was used for antigen retrieval.



Immunocytochemistry analysis of alpha Internexin (green) in hela using alpha Internexin antibody, and DAPI(blue).