

Product Name: alpha 1-Antitrypsin Rabbit Monoclonal Antibody**Catalog #:** AMRe02894

For research use only.

Summary

Description	Recombinant rabbit monoclonal antibody
Host	Rabbit
Application	WB,IP
Reactivity	Human
Conjugation	Unconjugated
Modification	Unmodified
Isotype	IgG
Clonality	Monoclonal
Form	Liquid
Concentration	0.5mg/ml. The concentration of this product may be batch-dependent.
Storage	Aliquot and store at -20°C (valid for 12 months). Avoid freeze/thaw cycles.
Shipping	Ice bags
Buffer	50mM Tris-Glycine(pH 7.4), 0.15M NaCl, 40% Glycerol, 0.01% Sodium azide and 0.05% protective protein
Purification	Affinity Purification

Application

Dilution Ratio	WB 1:500-1:1000,IP 1:20-1:50
Molecular Weight	Calculated MW: 47 kDa; Observed MW: 55 kDa

Antigen Information

Gene Name	SERPINA1
Alternative Names	SERPINA1; AAT; PI; Alpha-1-antitrypsin; Alpha-1 protease inhibitor; Alpha-1-antiproteinase; Serpin A1
Gene ID	5265
SwissProt ID	P01009
Immunogen	Recombinant protein of human alpha 1 Antitrypsin

Background

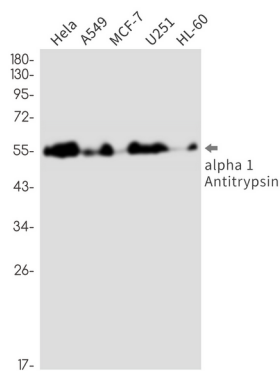
SERPINA1 is secreted and is a serine protease inhibitor which its targets include elastase, plasmin, collagenase, thrombin,

leucocytic proteases, trypsin, chymotrypsin, and plasminogen activator. Inhibitor of serine proteases. Its primary target is elastase, but it also has a moderate affinity for plasmin and thrombin.

Research Area

Cell Biology

Image Data



Western blot analysis of alpha 1 Antitrypsin in HeLa, A549, MCF-7, U251, HL-60 lysates using alpha 1-Antitrypsin antibody.