
Product Name: 14-3-3 gamma Rabbit Monoclonal antibody**Catalog #: AMRe02881**

For research use only.

Summary

Description	Recombinant rabbit monoclonal antibody
Host	Rabbit
Application	WB
Reactivity	Human, Mouse, Rat
Conjugation	Unconjugated
Modification	Unmodified
Isotype	IgG
Clonality	Monoclonal Antibody
Form	Liquid
Concentration	0.21mg/ml. The concentration of this product may be batch-dependent.
Storage	Aliquot and store at -20°C (valid for 12 months). Avoid freeze/thaw cycles.
Shipping	Ice bags
Buffer	50mM Tris-Glycine(pH 7.4), 0.15M NaCl, 40% Glycerol, 0.01% Sodium azide and 0.05% protective protein
Purification	Affinity Purified

Application

Dilution Ratio	WB 1:500-1:1000
Molecular Weight	Calculated MW: 28 kDa; Observed MW: 28 kDa

Antigen Information

Gene Name	YWHAG
Alternative Names	YWHAG; 14-3-3 protein gamma; Protein kinase C inhibitor protein 1; KCIP-1
Gene ID	7532
SwissProt ID	P61981
Immunogen	A synthetic peptide of human 14-3-3 gamma/YWHAG

Background

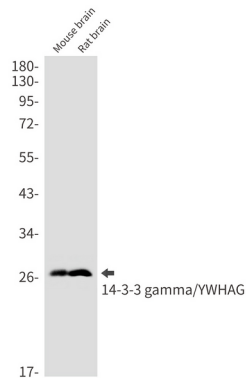
Induce target protein conformational changes that modify target protein function. Distinct temporal and spatial expression patterns of 14-3-3 isoforms have been observed in development and in acute response to extracellular signals and drugs,

suggesting that 14-3-3 isoforms may perform different functions despite their sequence similarities.

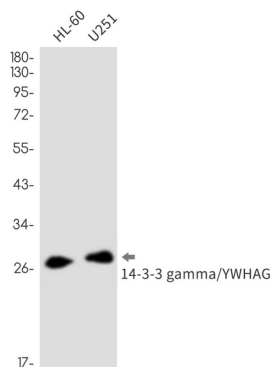
Research Area

Neuroscience

Image Data



Western blot analysis of 14-3-3 gamma/YWHAG in mouse brain, rat brain lysates using 14-3-3 gamma antibody.



Western blot analysis of 14-3-3 gamma/YWHAG in HL-60, U251 lysates using 14-3-3 gamma/YWHAG antibody.