
Product Name: Phospho-Rb (Ser608) Rabbit Monoclonal Antibody**Catalog #: AMRe02871**

For research use only.

Summary

Description	Recombinant rabbit monoclonal antibody
Host	Rabbit
Application	WB,IHC
Reactivity	Human,Rat
Conjugation	Unconjugated
Modification	Phosphorylated
Isotype	IgG
Clonality	Monoclonal
Form	Liquid
Concentration	0.5mg/ml. The concentration of this product may be batch-dependent.
Storage	Aliquot and store at -20°C (valid for 12 months). Avoid freeze/thaw cycles.
Shipping	Ice bags
Buffer	50mM Tris-Glycine(pH 7.4), 0.15M NaCl, 40% Glycerol, 0.01% Sodium azide and 0.05% protective protein
Purification	Affinity Purification

Application

Dilution Ratio	WB 1:500-1:1000,IHC 1:50-1:100
Molecular Weight	Calculated MW: 106 kDa; Observed MW: 110 kDa

Antigen Information

Gene Name	RB1
Alternative Names	RB1; Retinoblastoma-associated protein; p105-Rb; pRb; Rb; pp110
Gene ID	5925
SwissProt ID	P06400
Immunogen	A synthetic Phosphorylated peptide corresponding to residues target protein

Background

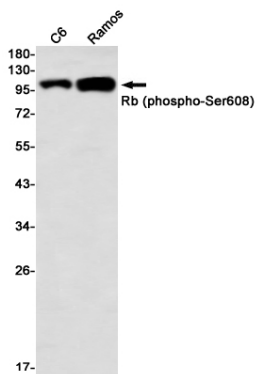
Cell cycle-dependent phosphorylation by a CDK inhibits Rb target binding and allows cell cycle progression. Rb inactivation and subsequent cell cycle progression likely requires an initial phosphorylation by cyclin D-CDK4/6 followed by cyclin E-CDK2

phosphorylation. Specificity of different CDK/cyclin complexes has been observed in vitro and cyclin D1 is required for Ser780 phosphorylation in vivo.

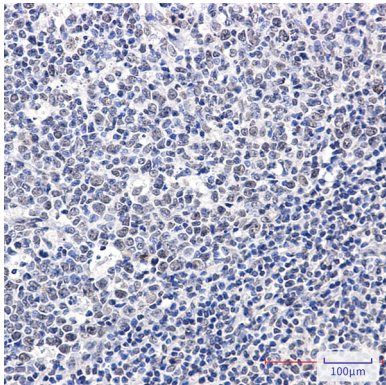
Research Area

Cell Biology

Image Data



Western blot analysis of Rb (Phospho-Ser608) in C6, Ramos lysates using Phospho-Rb (Ser608) antibody.



Immunohistochemistry analysis of paraffin-embedded Human tonsil using Rb (Phospho-Ser608) antibody. High-pressure and temperature Sodium Citrate pH 6.0 was used for antigen retrieval.