
Product Name: Phospho-PML Protein (Ser518) Rabbit Monoclonal Antibody**Catalog #: AMRe02867**

For research use only.

Summary

Description	Recombinant rabbit monoclonal antibody
Host	Rabbit
Application	WB,IHC
Reactivity	Human
Conjugation	Unconjugated
Modification	Phosphorylated
Isotype	IgG
Clonality	Monoclonal
Form	Liquid
Concentration	0.5mg/ml. The concentration of this product may be batch-dependent.
Storage	Aliquot and store at -20°C (valid for 12 months). Avoid freeze/thaw cycles.
Shipping	Ice bags
Buffer	50mM Tris-Glycine(pH 7.4), 0.15M NaCl, 40% Glycerol, 0.01% Sodium azide and 0.05% protective protein
Purification	Affinity Purification

Application

Dilution Ratio	WB 1:500-1:1000,IHC 1:50-1:100
Molecular Weight	Calculated MW: 98 kDa; Observed MW: 98,117 kDa

Antigen Information

Gene Name	PML
Alternative Names	PML; MYL; RNF71; TRIM19; Protein PML; Promyelocytic leukemia protein; RING finger protein 71; Tripartite motif-containing protein 19
Gene ID	5371
SwissProt ID	P29590
Immunogen	A synthetic Phosphorylated peptide corresponding to residues target protein

Background

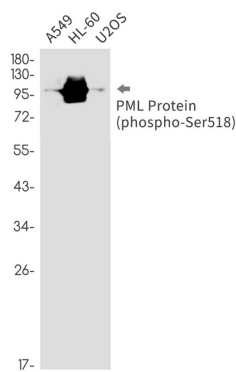
Regulates RB1 phosphorylation and activity. Required for normal development of the brain cortex during embryogenesis. Can

sequester herpes virus and varicella virus proteins inside PML bodies, and thereby inhibit the formation of infectious viral particles. Regulates phosphorylation of ITPR3 and plays a role in the regulation of calcium homeostasis at the endoplasmic reticulum (By similarity). Regulates transcription activity of ELF4.

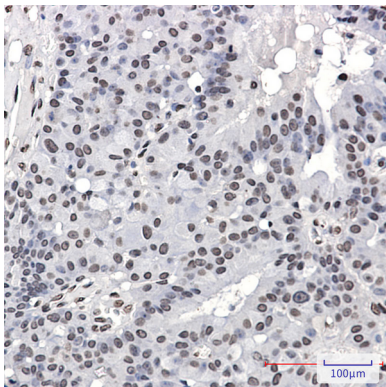
Research Area

Epigenetics and Nuclear Signaling

Image Data



Western blot analysis of Phospho-PML Protein (Ser518) in A549, HL-60, U2OS lysates using Phospho-PML Protein (Ser518) antibody.



Immunohistochemistry analysis of paraffin-embedded Human breast cancer using PML Protein (Phospho-Ser518) antibody. High-pressure and temperature Sodium Citrate pH 6.0 was used for antigen retrieval.