

Product Name: Phospho-PKC delta (Ser299) Rabbit Monoclonal Antibody**Catalog #: AMRe02865**

For research use only.

Summary

Description	Recombinant rabbit monoclonal antibody
Host	Rabbit
Application	WB,IHC,IP
Reactivity	Human
Conjugation	Unconjugated
Modification	Phosphorylated
Isotype	IgG
Clonality	Monoclonal
Form	Liquid
Concentration	0.5mg/ml. The concentration of this product may be batch-dependent.
Storage	Aliquot and store at -20°C (valid for 12 months). Avoid freeze/thaw cycles.
Shipping	Ice bags
Buffer	50mM Tris-Glycine(pH 7.4), 0.15M NaCl, 40% Glycerol, 0.01% Sodium azide and 0.05% protective protein
Purification	Affinity Purification

Application

Dilution Ratio	WB 1:500-1:1000,IHC 1:50-1:100,IP 1:20-1:50
Molecular Weight	Calculated MW: 78 kDa; Observed MW: 78 kDa

Antigen Information

Gene Name	PRKCD
Alternative Names	Protein kinase C delta type; Tyrosine-protein kinase PRKCD; nPKC-delta
Gene ID	5580
SwissProt ID	Q05655
Immunogen	A synthetic Phosphorylated peptide corresponding to residues target protein

Background

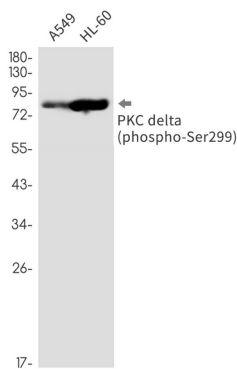
Protein kinase C (PKC) is a family of serine- and threonine-specific protein kinases that can be activated by calcium and the second messenger diacylglycerol. PKC family members phosphorylate a wide variety of protein targets and are known to be

involved in diverse cellular signaling pathways.

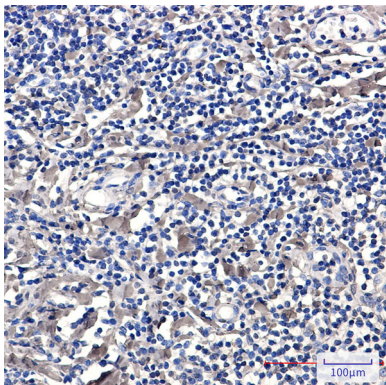
Research Area

Signal Transduction

Image Data



Western blot analysis of Phospho-PKC delta (Ser299) in A549, HL-60 lysates using Phospho-PKC delta (Ser299) antibody.



Immunohistochemistry analysis of paraffin-embedded Human tonsil using PKC delta (Phospho-Ser299) antibody. High-pressure and temperature Sodium Citrate pH 6.0 was used for antigen retrieval.