

---

**Product Name: Phospho-p53 (Ser6) Rabbit Monoclonal Antibody****Catalog #: AMRe02864**

For research use only.

**Summary**

<b>Description</b>	Recombinant rabbit monoclonal antibody
<b>Host</b>	Rabbit
<b>Application</b>	WB,IHC,IP
<b>Reactivity</b>	Human
<b>Conjugation</b>	Unconjugated
<b>Modification</b>	Phosphorylated
<b>Isotype</b>	IgG
<b>Clonality</b>	Monoclonal
<b>Form</b>	Liquid
<b>Concentration</b>	0.5mg/ml. The concentration of this product may be batch-dependent.
<b>Storage</b>	Aliquot and store at -20°C (valid for 12 months). Avoid freeze/thaw cycles.
<b>Shipping</b>	Ice bags
<b>Buffer</b>	50mM Tris-Glycine(pH 7.4), 0.15M NaCl, 40% Glycerol, 0.01% Sodium azide and 0.05% protective protein
<b>Purification</b>	Affinity Purification

**Application**

<b>Dilution Ratio</b>	WB 1:500-1:1000,IHC 1:50-1:100,IP 1:20-1:50
<b>Molecular Weight</b>	Calculated MW: 44 kDa; Observed MW: 53 kDa

**Antigen Information**

<b>Gene Name</b>	TP53
<b>Alternative Names</b>	TP53; P53; Cellular tumor antigen p53; Antigen NY-CO-13; Phosphoprotein p53; Tumor suppressor p53
<b>Gene ID</b>	7157
<b>SwissProt ID</b>	P04637
<b>Immunogen</b>	A synthetic Phosphorylated peptide corresponding to residues target protein

**Background**

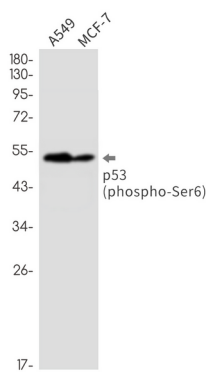
Tumor protein p53, a nuclear protein, plays an essential role in the regulation of cell cycle, specifically in the transition from G0

to G1. It is found in very low levels in normal cells, however, in a variety of transformed cell lines, it is expressed in high amounts, and believed to contribute to transformation and malignancy. p53 is a DNA-binding protein containing DNA-binding, oligomerization and transcription activation domains.

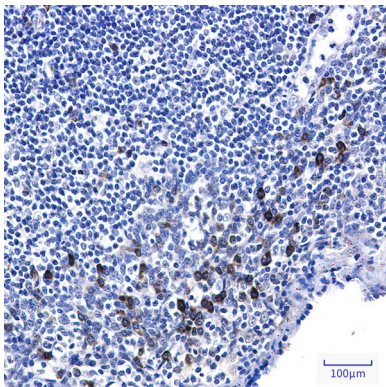
## Research Area

Cell Biology

## Image Data



Western blot analysis of Phospho-p53 (Ser6) in A549, MCF-7 lysates using Phospho-p53 (Ser6) antibody.



Immunohistochemistry analysis of paraffin-embedded Human tonsil using p53 (Phospho-Ser6) antibody. High-pressure and temperature Sodium Citrate pH 6.0 was used for antigen retrieval.