

Product Name: Phospho-c-Met (Tyr1349) Rabbit Monoclonal Antibody**Catalog #: AMRe02861**

For research use only.

Summary

Description	Recombinant rabbit monoclonal antibody
Host	Rabbit
Application	WB,IP
Reactivity	Human
Conjugation	Unconjugated
Modification	Phosphorylated
Isotype	IgG
Clonality	Monoclonal
Form	Liquid
Concentration	0.5mg/ml. The concentration of this product may be batch-dependent.
Storage	Aliquot and store at -20°C (valid for 12 months). Avoid freeze/thaw cycles.
Shipping	Ice bags
Buffer	50mM Tris-Glycine(pH 7.4), 0.15M NaCl, 40% Glycerol, 0.01% Sodium azide and 0.05% protective protein
Purification	Affinity Purification

Application

Dilution Ratio	WB 1:500-1:1000,IP 1:20-1:50
Molecular Weight	Calculated MW: 156 kDa; Observed MW: 170,140 kDa

Antigen Information

Gene Name	MET
Alternative Names	MET; Hepatocyte growth factor receptor; HGF receptor; HGF/SF receptor; Proto-oncogene c-Met; Scatter factor receptor; SF receptor; Tyrosine-protein kinase Met
Gene ID	4233
SwissProt ID	P08581
Immunogen	A synthetic Phosphorylated peptide corresponding to residues target protein

Background

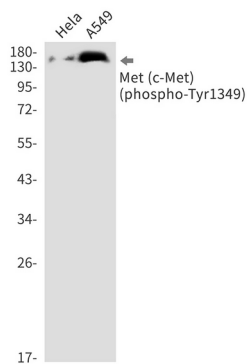
The proto-oncogene MET product is the hepatocyte growth factor receptor and encodes tyrosine-kinase activity. The primary

single chain precursor protein is post-translationally cleaved to produce the alpha and beta subunits, which are disulfide linked to form the mature receptor.

Research Area

Signal Transduction

Image Data



Western blot analysis of Phospho-Met (c-Met) (Tyr1349) in HeLa, A549 lysates using Phospho-c-Met (Tyr1349) antibody.