

Product Name: Phospho-delta 1 Catenin (Thr916) Rabbit Monoclonal Antibody**Catalog #: AMRe02844**

For research use only.

Summary

Description	Recombinant rabbit monoclonal antibody
Host	Rabbit
Application	WB,IHC,ICC/IF
Reactivity	Human,Mouse
Conjugation	Unconjugated
Modification	Phosphorylated
Isotype	IgG
Clonality	Monoclonal
Form	Liquid
Concentration	0.5mg/ml. The concentration of this product may be batch-dependent.
Storage	Aliquot and store at -20°C (valid for 12 months). Avoid freeze/thaw cycles.
Shipping	Ice bags
Buffer	50mM Tris-Glycine(pH 7.4), 0.15M NaCl, 40% Glycerol, 0.01% Sodium azide and 0.05% protective protein
Purification	Affinity Purification

Application

Dilution Ratio	WB 1:500-1:1000,IHC 1:50-1:100,ICC/IF 1:50-1:200
Molecular Weight	Calculated MW: 108 kDa; Observed MW: 100 kDa

Antigen Information

Gene Name	CTNND1
Alternative Names	CAS; p120; BCDS2; CTNND; P120CAS; P120CTN; p120(CAS); p120(CTN)
Gene ID	1500
SwissProt ID	O60716
Immunogen	A synthetic Phosphorylated peptide corresponding to residues target protein

Background

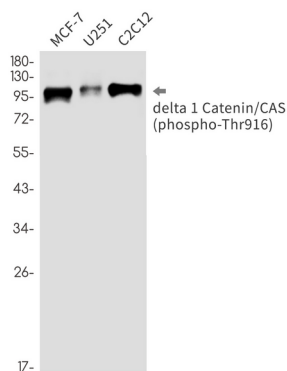
Catenin δ -1 (p120 catenin) has an amino-terminal coiled-coil domain followed by a regulatory domain containing multiple phosphorylation sites and a central Armadillo repeat domain of ten linked 42-amino acid repeats. The carboxy-terminal tail has

no known function. Catenin δ -1 fulfills critical roles in the regulation of cell-cell adhesion as it regulates E-cadherin turnover at the cell surface to determine the level of E-cadherin available for cell-cell adhesion.

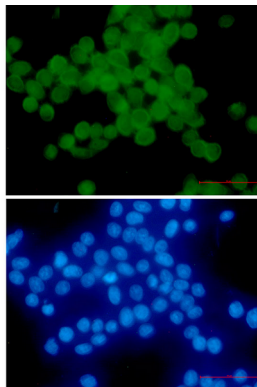
Research Area

Cell Biology

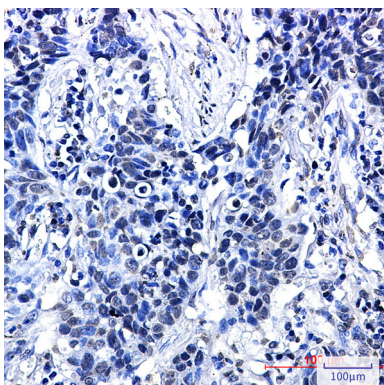
Image Data



Western blot analysis of Phospho-delta 1 Catenin/CAS (Thr916) in MCF-7, U251, C2C12 lysates using Phospho-delta 1 Catenin (Thr916) antibody.



Immunocytochemistry analysis of delta 1 Catenin/CAS (Phospho-Thr916) (green) in HeLa using delta 1 Catenin/CAS (Phospho-Thr916) antibody, and DAPI (blue).



Immunohistochemistry analysis of paraffin-embedded Human lung cancer using Phospho-delta 1 Catenin/CAS (Thr916) antibody. High-pressure and temperature Sodium Citrate pH 6.0 was used for antigen retrieval.