

---

**Product Name: CBX4 Rabbit Monoclonal Antibody****Catalog #: AMRe02830**

For research use only.

**Summary**

<b>Description</b>	Recombinant rabbit monoclonal antibody
<b>Host</b>	Rabbit
<b>Application</b>	WB
<b>Reactivity</b>	Human, Mouse, Rat
<b>Conjugation</b>	Unconjugated
<b>Modification</b>	Unmodified
<b>Isotype</b>	IgG
<b>Clonality</b>	Monoclonal
<b>Form</b>	Liquid
<b>Concentration</b>	0.63mg/ml. The concentration of this product may be batch-dependent.
<b>Storage</b>	Aliquot and store at -20°C (valid for 12 months). Avoid freeze/thaw cycles.
<b>Shipping</b>	Ice bags
<b>Buffer</b>	50mM Tris-Glycine(pH 7.4), 0.15M NaCl, 40% Glycerol, 0.01% Sodium azide and 0.05% protective protein
<b>Purification</b>	Affinity Purification

**Application**

<b>Dilution Ratio</b>	WB 1:500-1:1000
<b>Molecular Weight</b>	Calculated MW: 61 kDa; Observed MW: 61 kDa

**Antigen Information**

<b>Gene Name</b>	CBX4
<b>Alternative Names</b>	CBX4; hPc2; NBP16; PC2
<b>Gene ID</b>	8535
<b>SwissProt ID</b>	O00257
<b>Immunogen</b>	A synthetic peptide of human CBX4

**Background**

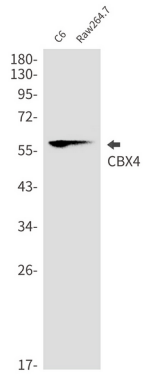
E3 SUMO-protein ligase which facilitates SUMO1 conjugation by UBE2I. Component of the Polycomb group (PcG) multiprotein PRC1 complex, a complex required to maintain the transcriptionally repressive state of many genes, including Hox genes,

throughout development.

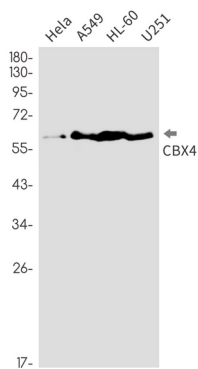
## Research Area

Epigenetics and Nuclear Signaling

## Image Data



Western blot analysis of CBX4 in C6, Raw264.7 lysates using CBX4 antibody.



Western blot analysis of CBX4 in HeLa, A549, HL-60, U251 lysates using CBX4 antibody.