

Product Name: Proteasome alpha 6 Rabbit Monoclonal Antibody**Catalog #: AMRe02823**

For research use only.

Summary

Description	Recombinant rabbit monoclonal antibody
Host	Rabbit
Application	WB
Reactivity	Human
Conjugation	Unconjugated
Modification	Unmodified
Isotype	IgG
Clonality	Monoclonal
Form	Liquid
Concentration	0.5mg/ml. The concentration of this product may be batch-dependent.
Storage	Aliquot and store at -20°C (valid for 12 months). Avoid freeze/thaw cycles.
Shipping	Ice bags
Buffer	50mM Tris-Glycine(pH 7.4), 0.15M NaCl, 40% Glycerol, 0.01% Sodium azide and 0.05% protective protein
Purification	Affinity Purification

Application

Dilution Ratio	WB 1:500-1:1000
Molecular Weight	Calculated MW: 27 kDa; Observed MW: 27 kDa

Antigen Information

Gene Name	PSMA6
Alternative Names	proteasome subunit alpha 6; IOTA; p27K; PROS27
Gene ID	5687
SwissProt ID	P60900
Immunogen	A synthetic peptide of human Proteasome subunit alpha type 6

Background

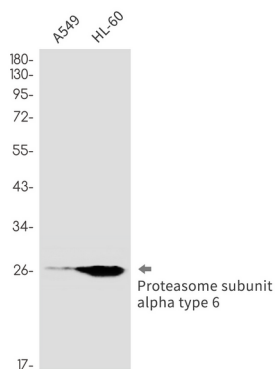
The proteasome is a multicatalytic proteinase complex with a highly ordered ring-shaped 20S core structure. The core structure is composed of 4 rings of 28 non-identical subunits; 2 rings are composed of 7 alpha subunits and 2 rings are composed of 7

beta subunits. Proteasomes are distributed throughout eukaryotic cells at a high concentration and cleave peptides in an ATP/ubiquitin-dependent process in a non-lysosomal pathway. An essential function of a modified proteasome, the immunoproteasome, is the processing of class I MHC peptides. This gene encodes a member of the peptidase T1A family, that is a 20S core alpha subunit. Multiple transcript variants encoding several different isoforms have been found for this gene. A pseudogene has been identified on the Y chromosome. [provided by RefSeq, Aug 2013]

Research Area

Cell Biology

Image Data



Western blot analysis of Proteasome subunit alpha type 6 in A549, HL-60 lysates using Proteasome alpha 6 antibody.