

**Product Name: SF20 Rabbit Monoclonal Antibody****Catalog #: AMRe02819**

For research use only.

**Summary**

|                      |  |
|----------------------|--|
| <b>Description</b>   | Recombinant rabbit monoclonal antibody   |
| <b>Host</b>          | Rabbit   |
| <b>Application</b>   | WB   |
| <b>Reactivity</b>    | Human  |
| <b>Conjugation</b>   | Unconjugated   |
| <b>Modification</b>  | Unmodified   |
| <b>Isotype</b>       | IgG  |
| <b>Clonality</b>     | Monoclonal   |
| <b>Form</b>          | Liquid   |
| <b>Concentration</b> | 0.5mg/ml. The concentration of this product may be batch-dependent.                                  |
| <b>Storage</b>       | Aliquot and store at -20°C (valid for 12 months). Avoid freeze/thaw cycles.                          |
| <b>Shipping</b>      | Ice bags   |
| <b>Buffer</b>        | 50mM Tris-Glycine(pH 7.4), 0.15M NaCl, 40% Glycerol, 0.01% Sodium azide and 0.05% protective protein |
| <b>Purification</b>  | Affinity Purification  |

**Application**

|                         |  |
|-------------------------|--|
| <b>Dilution Ratio</b>   | WB 1:500-1:1000                            |
| <b>Molecular Weight</b> | Calculated MW: 19 kDa; Observed MW: 19 kDa |

**Antigen Information**

|                          |   |
|--------------------------|---|
| <b>Gene Name</b>         | MYDGF   |
| <b>Alternative Names</b> | IL25; IL27; SF20; IL27w; C19orf10; R33729_1; EUROIMAGE1875335 |
| <b>Gene ID</b>           | 56005   |
| <b>SwissProt ID</b>      | Q969H8  |
| <b>Immunogen</b>         | Recombinant protein of human SF20                             |

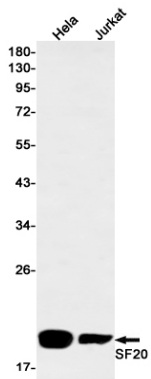
**Background**

The protein encoded by this gene was previously thought to support proliferation of lymphoid cells and was considered an interleukin. However, this activity has not been reproducible and the function of this protein is currently unknown.

## Research Area

Cell Biology

## Image Data



Western blot analysis of SF20 in HeLa, Jurkat lysates using SF20 antibody.