
Product Name: PIM1 Rabbit Monoclonal antibody**Catalog #: AMRe02810**

For research use only.

Summary

Description	Recombinant rabbit monoclonal antibody
Host	Rabbit
Application	WB,IHC
Reactivity	Human
Conjugation	Unconjugated
Modification	Unmodified
Isotype	IgG
Clonality	Monoclonal Antibody
Form	Liquid
Concentration	0.37mg/ml. The concentration of this product may be batch-dependent.
Storage	Aliquot and store at -20°C (valid for 12 months). Avoid freeze/thaw cycles.
Shipping	Ice bags
Buffer	50mM Tris-Glycine(pH 7.4), 0.15M NaCl, 40% Glycerol, 0.01% Sodium azide and 0.05% protective protein
Purification	Affinity Purified

Application

Dilution Ratio	WB 1:500-1:1000,IHC 1:50-1:100
Molecular Weight	Calculated MW: 36 kDa; Observed MW: 36 kDa

Antigen Information

Gene Name	PIM1
Alternative Names	PIM1; Serine/threonine-protein kinase pim-1
Gene ID	5292
SwissProt ID	P11309
Immunogen	A synthetic peptide of human PIM1

Background

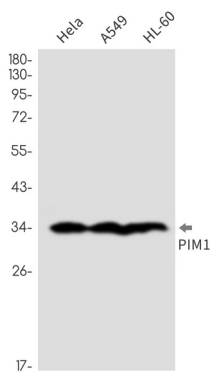
Pim1 a proto-oncogene serine/threonine kinase involved in cell survival and cell proliferation and thus providing a selective advantage in tumorigenesis. Exerts its oncogenic activity through: the regulation of MYC transcriptional activity, the regulation

of cell cycle progression and by phosphorylation and inhibition of proapoptotic proteins (BAD, MAP3K5, FOXO3). Phosphorylation of MYC leads to an increase of MYC protein stability and thereby an increase of transcriptional activity. The stabilization of MYC exerted by PIM1 might explain partly the strong synergism between these two oncogenes in tumorigenesis.

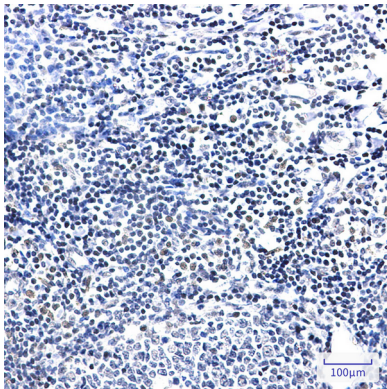
Research Area

Signal Transduction

Image Data



Western blot analysis of PIM1 in HeLa, A549, HL-60 lysates using PIM1 antibody.



Immunohistochemistry analysis of paraffin-embedded Human tonsil using PIM1 antibody. High-pressure and temperature Sodium Citrate pH 6.0 was used for antigen retrieval.