

**Product Name: PAK1 Rabbit Monoclonal antibody****Catalog #: AMRe02803**

For research use only.

**Summary**

<b>Description</b>	Recombinant rabbit monoclonal antibody
<b>Host</b>	Rabbit
<b>Application</b>	WB,IHC,ICC/IF,IP
<b>Reactivity</b>	Human,Mouse,Rat,Hamster
<b>Conjugation</b>	Unconjugated
<b>Modification</b>	Unmodified
<b>Isotype</b>	IgG
<b>Clonality</b>	Monoclonal Antibody
<b>Form</b>	Liquid
<b>Concentration</b>	0.16mg/ml. The concentration of this product may be batch-dependent.
<b>Storage</b>	Aliquot and store at -20°C (valid for 12 months). Avoid freeze/thaw cycles.
<b>Shipping</b>	Ice bags
<b>Buffer</b>	50mM Tris-Glycine(pH 7.4), 0.15M NaCl, 40% Glycerol, 0.01% Sodium azide and 0.05% protective protein
<b>Purification</b>	Affinity Purified

**Application**

<b>Dilution Ratio</b>	WB 1:500-1:1000,IHC 1:50-1:100,ICC/IF 1:50-1:200,IP 1:20-1:50
<b>Molecular Weight</b>	Calculated MW: 61 kDa; Observed MW: 61 kDa

**Antigen Information**

<b>Gene Name</b>	PAK1
<b>Alternative Names</b>	PAK1; Serine/threonine-protein kinase PAK 1; Alpha-PAK; p21-activated kinase 1; PAK-1; p65-PAK
<b>Gene ID</b>	5058
<b>SwissProt ID</b>	Q13153
<b>Immunogen</b>	A synthetic peptide of human PAK1

**Background**

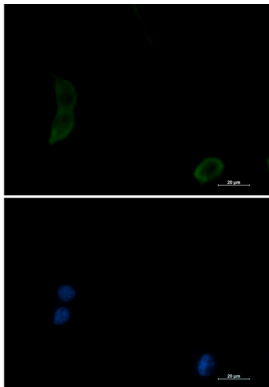
The activated kinase acts on a variety of targets. Likely to be the GTPase effector that links the Rho-related GTPases to the JNK

MAP kinase pathway. Activated by CDC42 and RAC1. Involved in dissolution of stress fibers and reorganization of focal complexes. Involved in regulation of microtubule biogenesis through phosphorylation of TBCB.

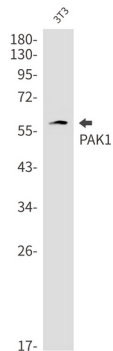
## Research Area

Cell Biology

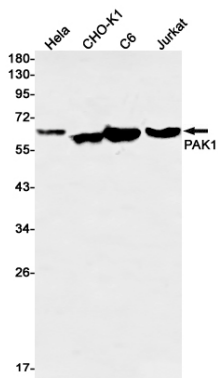
## Image Data



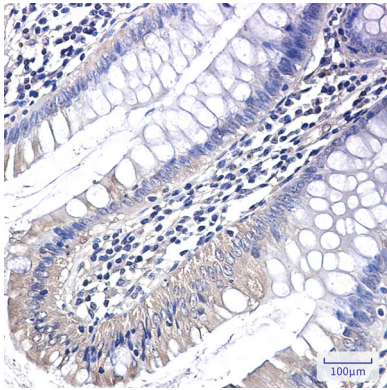
Immunocytochemistry analysis of PAK1 (green) in 3T3 using PAK1 antibody, and DAPI (blue).



Western blot analysis of PAK1 in 3T3 lysates using PAK1 antibody.



Western blot analysis of PAK1 in HeLa, CHO-K1, C6, Jurkat lysates using PAK1 antibody



Immunohistochemistry analysis of paraffin-embedded Human colon cancer using PAK1 antibody. High-pressure and temperature Sodium Citrate pH 6.0 was used for antigen retrieval.