
Product Name: RSK3 Rabbit Monoclonal Antibody**Catalog #: AMRe02802**

For research use only.

Summary

| | |
|----------------------|--|
| Description | Recombinant rabbit monoclonal antibody |
| Host | Rabbit |
| Application | WB,IHC,ICC/IF,IP |
| Reactivity | Human,Hamster |
| Conjugation | Unconjugated |
| Modification | Unmodified |
| Isotype | IgG |
| Clonality | Monoclonal |
| Form | Liquid |
| Concentration | 0.54mg/ml. The concentration of this product may be batch-dependent. |
| Storage | Aliquot and store at -20°C (valid for 12 months). Avoid freeze/thaw cycles. |
| Shipping | Ice bags |
| Buffer | 50mM Tris-Glycine(pH 7.4), 0.15M NaCl, 40% Glycerol, 0.01% Sodium azide and 0.05% protective protein |
| Purification | Affinity Purification |

Application

| | |
|-------------------------|---|
| Dilution Ratio | WB 1:500-1:1000,IHC 1:50-1:100,ICC/IF 1:50-1:200,IP 1:20-1:50 |
| Molecular Weight | Calculated MW: 83 kDa; Observed MW: 90 kDa |

Antigen Information

| | |
|--------------------------|---|
| Gene Name | RPS6KA2 RPS6KA2; MAPKAPK1C; RSK3; Ribosomal protein S6 kinase alpha-2; S6K-alpha-2; 90 kDa |
| Alternative Names | ribosomal protein S6 kinase 2; p90-RSK 2; p90RSK2; MAP kinase-activated protein kinase 1c; MAPK-activated protein kinase 1c; MAPKAP kinase 1c; MAPKAPK-1c; Ri |
| Gene ID | 6196 |
| SwissProt ID | Q15349 |
| Immunogen | A synthetic peptide of human RSK3 |

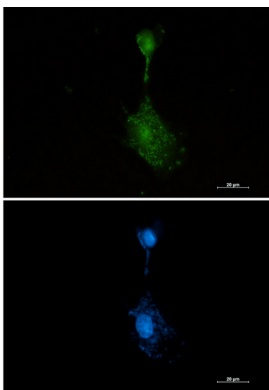
Background

This gene encodes a member of the RSK (ribosomal S6 kinase) family of serine/threonine kinases. This kinase contains 2 non-identical kinase catalytic domains and phosphorylates various substrates, including members of the mitogen-activated kinase (MAPK) signalling pathway. The activity of this protein has been implicated in controlling cell growth and differentiation. Alternate transcriptional splice variants, encoding different isoforms, have been characterized.

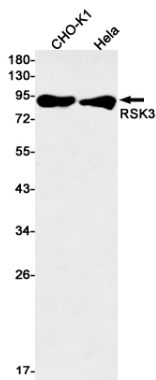
Research Area

Epigenetics and Nuclear Signaling

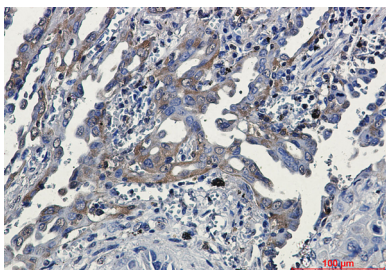
Image Data



Immunocytochemistry analysis of RSK3 (green) in U87-MG using RSK3 antibody, and DAPI (blue).



Western blot analysis of RSK3 in CHO-K1, HeLa lysates using RSK3 antibody.



Immunohistochemistry analysis of paraffin-embedded Human lung cancer tissue using RSK3 antibody. High-pressure and temperature Sodium Citrate pH 6.0 was used for antigen retrieval.