
Product Name: MEK1 Rabbit Monoclonal Antibody**Catalog #: AMRe02795**

For research use only.

Summary

Description	Recombinant rabbit monoclonal antibody
Host	Rabbit
Application	WB,ICC/IF,IP
Reactivity	Human
Conjugation	Unconjugated
Modification	Unmodified
Isotype	IgG
Clonality	Monoclonal
Form	Liquid
Concentration	0.3mg/ml. The concentration of this product may be batch-dependent.
Storage	Aliquot and store at -20°C (valid for 12 months). Avoid freeze/thaw cycles.
Shipping	Ice bags
Buffer	50mM Tris-Glycine(pH 7.4), 0.15M NaCl, 40% Glycerol, 0.01% Sodium azide and 0.05% protective protein
Purification	Affinity Purification

Application

Dilution Ratio	WB 1:500-1:1000,ICC/IF 1:50-1:200,IP 1:20-1:50
Molecular Weight	Calculated MW: 43 kDa; Observed MW: 43 kDa

Antigen Information

Gene Name	MAP2K1
Alternative Names	MAP2K1; MEK1; PRKMK1; Dual specificity mitogen-activated protein kinase kinase 1; MAP kinase kinase 1; MAPKK 1; MKK1; ERK activator kinase 1; MAPK/ERK kinase 1; MEK 1
Gene ID	5604
SwissProt ID	Q02750
Immunogen	A synthetic peptide corresponding to target protein

Background

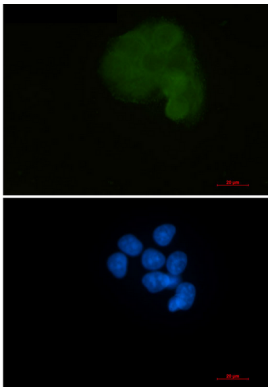
The protein encoded by this gene is a member of the dual specificity protein kinase family, which acts as a mitogen-activated

protein (MAP) kinase kinase. MAP kinases, also known as extracellular signal-regulated kinases (ERKs), act as an integration point for multiple biochemical signals.

Research Area

Signal Transduction

Image Data



Immunocytochemistry analysis of MEK1 (green) in HeLa using MEK1 antibody, and DAPI (blue).