
Product Name: WDR1 Rabbit Monoclonal Antibody**Catalog #: AMRe02771**

For research use only.

Summary

Description	Recombinant rabbit monoclonal antibody
Host	Rabbit
Application	WB,IHC,ICC/IF
Reactivity	Human
Conjugation	Unconjugated
Modification	Unmodified
Isotype	IgG
Clonality	Monoclonal
Form	Liquid
Concentration	0.55mg/ml. The concentration of this product may be batch-dependent.
Storage	Aliquot and store at -20°C (valid for 12 months). Avoid freeze/thaw cycles.
Shipping	Ice bags
Buffer	50mM Tris-Glycine(pH 7.4), 0.15M NaCl, 40% Glycerol, 0.01% Sodium azide and 0.05% protective protein
Purification	Affinity Purification

Application

Dilution Ratio	WB 1:500-1:1000,IHC 1:50-1:100,ICC/IF 1:50-1:200
Molecular Weight	Calculated MW: 66 kDa; Observed MW: 66 kDa

Antigen Information

Gene Name	WDR1
Alternative Names	AIP1; NORI-1; HEL-S-52
Gene ID	9948
SwissProt ID	O75083
Immunogen	A synthetic peptide of human WDR1

Background

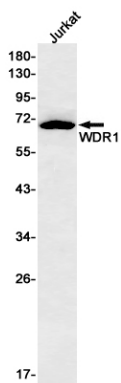
Induces disassembly of actin filaments in conjunction with ADF/cofilin family proteins (PubMed:15629458). Enhances cofilin-mediated actin severing . Involved in cytokinesis. Involved in chemotactic cell migration by restricting lamellipodial membrane

protrusions (PubMed:18494608). Involved in myocardium sarcomere organization. Required for cardiomyocyte growth and maintenance . Involved in megakaryocyte maturation and platelet shedding. Required for the establishment of planar cell polarity (PCP) during follicular epithelium development and for cell shape changes during PCP; the function seems to implicate cooperation with CFL1 and/or DSTN/ADF. Involved in the generation/maintenance of cortical tension . Involved in assembly and maintenance of epithelial apical cell junctions and plays a role in the organization of the perijunctional actomyosin belt (PubMed:25792565).

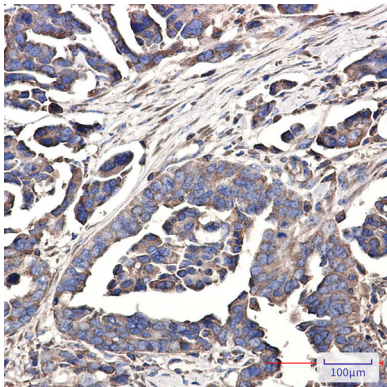
Research Area

Signal Transduction

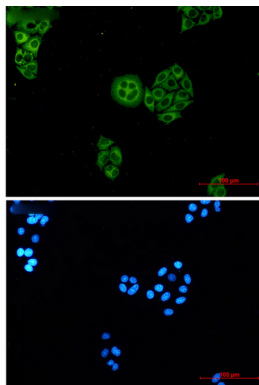
Image Data



Western blot analysis of WDR1 in Jurkat lysates using WDR1 antibody.



Immunohistochemistry analysis of paraffin-embedded Human Cholangiocarcinoma using WDR1 antibody. High-pressure and temperature Sodium Citrate pH 6.0 was used for antigen retrieval.



Immunocytochemistry analysis of WDR1 (green) in HeLa cells using WDR1 antibody, and DAPI (blue)

