

**Product Name: UBA2 Rabbit Monoclonal Antibody****Catalog #: AMRe02736**

For research use only.

**Summary**

<b>Description</b>	Recombinant rabbit monoclonal antibody
<b>Host</b>	Rabbit
<b>Application</b>	WB, ICC/IF, IP
<b>Reactivity</b>	Human, Rat
<b>Conjugation</b>	Unconjugated
<b>Modification</b>	Unmodified
<b>Isotype</b>	IgG
<b>Clonality</b>	Monoclonal
<b>Form</b>	Liquid
<b>Concentration</b>	0.68mg/ml. The concentration of this product may be batch-dependent.
<b>Storage</b>	Aliquot and store at -20°C (valid for 12 months). Avoid freeze/thaw cycles.
<b>Shipping</b>	Ice bags
<b>Buffer</b>	50mM Tris-Glycine(pH 7.4), 0.15M NaCl, 40% Glycerol, 0.01% Sodium azide and 0.05% protective protein
<b>Purification</b>	Affinity Purification

**Application**

<b>Dilution Ratio</b>	WB 1:500-1:1000, ICC/IF 1:50-1:200, IP 1:20-1:50
<b>Molecular Weight</b>	Calculated MW: 71 kDa; Observed MW: 90 kDa

**Antigen Information**

<b>Gene Name</b>	UBA2
<b>Alternative Names</b>	UBA2; SAE2; UBLE1B; HRIHFB2115; SUMO-activating enzyme subunit 2; Anthracycline-associated resistance ARX; Ubiquitin-like 1-activating enzyme E1B
<b>Gene ID</b>	10054
<b>SwissProt ID</b>	Q9UBT2
<b>Immunogen</b>	A synthetic peptide of human UBA2

**Background**

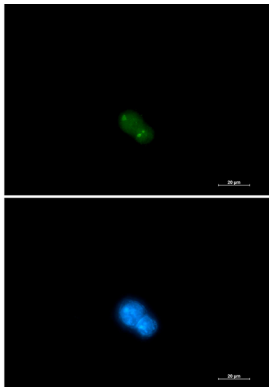
The heterodimer acts as a E1 ligase for SUMO1, SUMO2, SUMO3, and probably SUMO4. It mediates ATP-dependent activation

of SUMO proteins followed by formation of a thioester bond between a SUMO protein and a conserved active site cysteine residue on UBA2/SAE2.

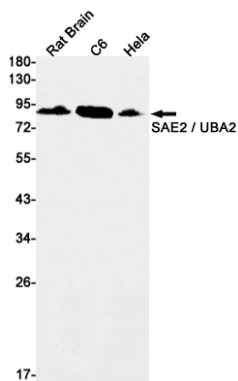
## Research Area

Cell Biology

## Image Data



Immunocytochemistry analysis of UBA2 (green) in 293 using UBA2 antibody, and DAPI (blue).



Western blot analysis of SAE2 / UBA2 in rat Brain, C6, HeLa lysates using SAE2 / UBA2 antibody.