

Product Name: Topoisomerase I Rabbit Monoclonal Antibody**Catalog #: AMRe02703**

For research use only.

Summary

Description	Recombinant rabbit monoclonal antibody
Host	Rabbit
Application	WB,IHC,ICC/IF
Reactivity	Human,Mouse,Rat
Conjugation	Unconjugated
Modification	Unmodified
Isotype	IgG
Clonality	Monoclonal
Form	Liquid
Concentration	0.55mg/ml. The concentration of this product may be batch-dependent.
Storage	Aliquot and store at -20°C (valid for 12 months). Avoid freeze/thaw cycles.
Shipping	Ice bags
Buffer	50mM Tris-Glycine(pH 7.4), 0.15M NaCl, 40% Glycerol, 0.01% Sodium azide and 0.05% protective protein
Purification	Affinity Purification

Application

Dilution Ratio	WB 1:500-1:1000,IHC 1:50-1:100,ICC/IF 1:50-1:200
Molecular Weight	Calculated MW: 91 kDa; Observed MW: 91 kDa

Antigen Information

Gene Name	TOP1
Alternative Names	TOP1; DNA topoisomerase 1; DNA topoisomerase I
Gene ID	7150
SwissProt ID	P11387
Immunogen	A synthetic peptide of human Topoisomerase I

Background

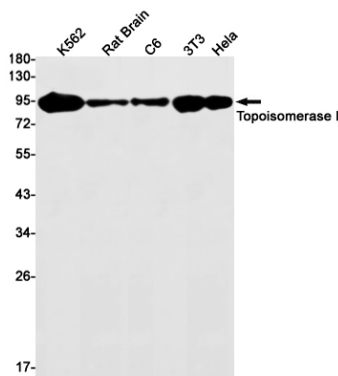
Releases the supercoiling and torsional tension of DNA introduced during the DNA replication and transcription by transiently cleaving and rejoining one strand of the DNA duplex. Introduces a single-strand break via transesterification at a target site in

duplex DNA. The scissile phosphodiester is attacked by the catalytic tyrosine of the enzyme, resulting in the formation of a DNA-(3'-phosphotyrosyl)-enzyme intermediate and the expulsion of a 5'-OH DNA strand.

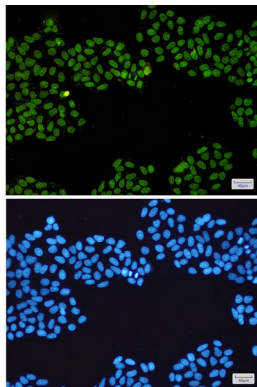
Research Area

Epigenetics and Nuclear Signaling

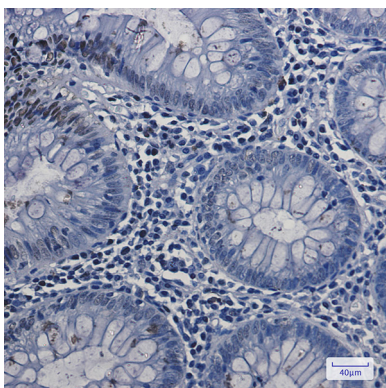
Image Data



Western blot analysis of Topoisomerase I in K562, rat Brain, C6, 3T3, HeLa lysates using Topoisomerase I antibody.



Immunocytochemistry analysis of Topoisomerase I (green) in HeLa using Topoisomerase I antibody, and DAPI (blue)



Immunohistochemistry analysis of paraffin-embedded Human colon cancer using Topoisomerase I antibody. High-pressure and temperature Sodium Citrate pH 6.0 was used for antigen retrieval.