
Product Name: TIMM44 Rabbit Monoclonal antibody**Catalog #: AMRe02692**

For research use only.

Summary

Description	Recombinant rabbit monoclonal antibody
Host	Rabbit
Application	WB,ICC/IF,IP
Reactivity	Human
Conjugation	Unconjugated
Modification	Unmodified
Isotype	IgG
Clonality	Monoclonal Antibody
Form	Liquid
Concentration	0.4mg/ml. The concentration of this product may be batch-dependent.
Storage	Aliquot and store at -20°C (valid for 12 months). Avoid freeze/thaw cycles.
Shipping	Ice bags
Buffer	50mM Tris-Glycine(pH 7.4), 0.15M NaCl, 40% Glycerol, 0.01% Sodium azide and 0.05% protective protein
Purification	Affinity Purified

Application

Dilution Ratio	WB 1:500-1:1000,ICC/IF 1:50-1:200,IP 1:20-1:50
Molecular Weight	Calculated MW: 51 kDa; Observed MW: 45 kDa

Antigen Information

Gene Name	TIMM44
Alternative Names	TIM44
Gene ID	10469
SwissProt ID	O43615
Immunogen	Recombinant protein of human TIMM44

Background

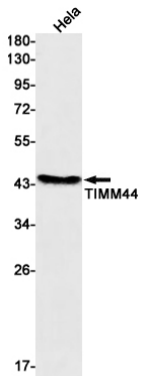
Essential component of the PAM complex, a complex required for the translocation of transit peptide-containing proteins from the inner membrane into the mitochondrial matrix in an ATP-dependent manner. Recruits mitochondrial HSP70 to drive

protein translocation into the matrix using ATP as an energy source.

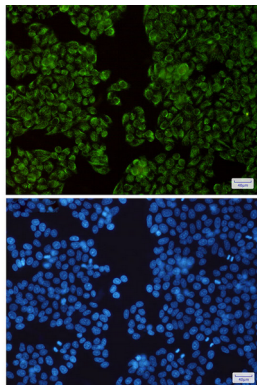
Research Area

Endocrine & Metabolism

Image Data



Western blot analysis of TIMM44 in HeLa lysates using TIMM44 antibody.



Immunocytochemistry analysis of TIMM44 (green) in HeLa using TIMM44 antibody, and DAPI (blue)