
Product Name: TIMELESS Rabbit Monoclonal antibody**Catalog #: AMRe02691**

For research use only.

Summary

Description	Recombinant rabbit monoclonal antibody
Host	Rabbit
Application	WB,IHC,ICC/IF
Reactivity	Human
Conjugation	Unconjugated
Modification	Unmodified
Isotype	IgG
Clonality	Monoclonal Antibody
Form	Liquid
Concentration	0.6mg/ml. The concentration of this product may be batch-dependent.
Storage	Aliquot and store at -20°C (valid for 12 months). Avoid freeze/thaw cycles.
Shipping	Ice bags
Buffer	50mM Tris-Glycine(pH 7.4), 0.15M NaCl, 40% Glycerol, 0.01% Sodium azide and 0.05% protective protein
Purification	Affinity Purified

Application

Dilution Ratio	WB 1:500-1:1000,IHC 1:50-1:100,ICC/IF 1:50-1:200
Molecular Weight	Calculated MW: 139 kDa; Observed MW: 150 kDa

Antigen Information

Gene Name	TIMELESS
Alternative Names	hTIM; TIM; TIM1; Timeless; timeless circadian clock 1; TIMELESS1
Gene ID	8914
SwissProt ID	Q9UNS1
Immunogen	A synthetic peptide of human Timeless

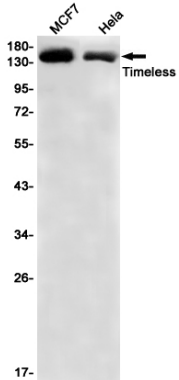
Background

Required for normal progression of S-phase. Involved in the circadian rhythm autoregulatory loop. Negatively regulates CLOCK-NPAS2/BMAL1-induced transactivation of PER1 possibly via translocation of PER1 into the nucleus.

Research Area

Epigenetics and Nuclear Signaling

Image Data



Western blot analysis of Timeless in MCF-7, HeLa lysates using TIMELESS antibody.