

---

**Product Name: Thrombomodulin Rabbit Monoclonal Antibody****Catalog #: AMRe02687**

For research use only.

**Summary**

<b>Description</b>	Recombinant rabbit monoclonal antibody
<b>Host</b>	Rabbit
<b>Application</b>	WB
<b>Reactivity</b>	Mouse,Rat
<b>Conjugation</b>	Unconjugated
<b>Modification</b>	Unmodified
<b>Isotype</b>	IgG
<b>Clonality</b>	Monoclonal
<b>Form</b>	Liquid
<b>Concentration</b>	0.68mg/ml. The concentration of this product may be batch-dependent.
<b>Storage</b>	Aliquot and store at -20°C (valid for 12 months). Avoid freeze/thaw cycles.
<b>Shipping</b>	Ice bags
<b>Buffer</b>	50mM Tris-Glycine(pH 7.4), 0.15M NaCl, 40% Glycerol, 0.01% Sodium azide and 0.05% protective protein
<b>Purification</b>	Affinity Purification

**Application**

<b>Dilution Ratio</b>	WB 1:500-1:1000
<b>Molecular Weight</b>	Calculated MW: 62 kDa; Observed MW: 95 kDa

**Antigen Information**

<b>Gene Name</b>	Thbd
<b>Alternative Names</b>	CD141; Fetomodulin; THBD; THRM; thrombomodulin; TM
<b>Gene ID</b>	21824.0
<b>SwissProt ID</b>	P15306
<b>Immunogen</b>	Recombinant protein of mouse Thrombomodulin

**Background**

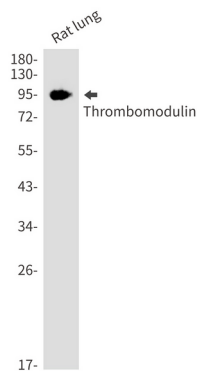
Thrombomodulin is a specific endothelial cell receptor that forms a 1:1 stoichiometric complex with thrombin. This complex is responsible for the conversion of protein C to the activated protein C (protein Ca). Once evolved, protein Ca scissions the

activated cofactors of the coagulation mechanism, factor Va and factor VIIIa, and thereby reduces the amount of thrombin generated.

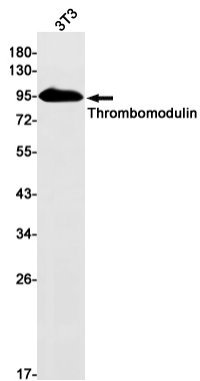
## Research Area

Cardiovascular

## Image Data



Western blot analysis of Thrombomodulin in rat lung lysates using Thrombomodulin antibody.



Western blot analysis of Thrombomodulin in 3T3 lysates using Thrombomodulin antibody.