

Product Name: Synaptophysin Like Protein 1 Rabbit Monoclonal Antibody**Catalog #: AMRe02660**

For research use only.

Summary

Description	Recombinant rabbit monoclonal antibody
Host	Rabbit
Application	WB,IHC
Reactivity	Human
Conjugation	Unconjugated
Modification	Unmodified
Isotype	IgG
Clonality	Monoclonal
Form	Liquid
Concentration	0.68mg/ml. The concentration of this product may be batch-dependent.
Storage	Aliquot and store at -20°C (valid for 12 months). Avoid freeze/thaw cycles.
Shipping	Ice bags
Buffer	50mM Tris-Glycine(pH 7.4), 0.15M NaCl, 40% Glycerol, 0.01% Sodium azide and 0.05% protective protein
Purification	Affinity Purification

Application

Dilution Ratio	WB 1:500-1:1000,IHC 1:50-1:100
Molecular Weight	Calculated MW: 29 kDa; Observed MW: 29 kDa

Antigen Information

Gene Name	SYPL1
Alternative Names	Pantophysin; SYPL1
Gene ID	6856
SwissProt ID	Q16563
Immunogen	Recombinant protein of human SYPL1

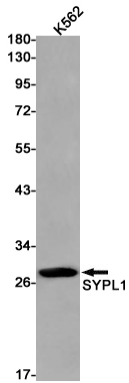
Background

Predicted to be involved in chemical synaptic transmission. Located in extracellular exosome.

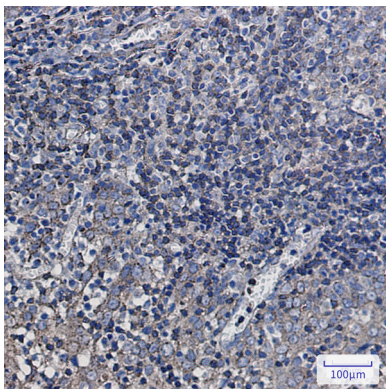
Research Area

Neuroscience

Image Data



Western blot analysis of SYPL1 in K562 lysates using Synaptophysin Like Protein 1 antibody.



Immunohistochemistry analysis of paraffin-embedded Human tonsil using SYPL1 antibody. High-pressure and temperature Sodium Citrate pH 6.0 was used for antigen retrieval.