

---

**Product Name: SUMO1 Rabbit Monoclonal Antibody****Catalog #: AMRe02649**

For research use only.

**Summary**

<b>Description</b>	Recombinant rabbit monoclonal antibody
<b>Host</b>	Rabbit
<b>Application</b>	WB,IHC
<b>Reactivity</b>	Human,Mouse,Rat
<b>Conjugation</b>	Unconjugated
<b>Modification</b>	Unmodified
<b>Isotype</b>	IgG
<b>Clonality</b>	Monoclonal
<b>Form</b>	Liquid
<b>Concentration</b>	0.54mg/ml. The concentration of this product may be batch-dependent.
<b>Storage</b>	Aliquot and store at -20°C (valid for 12 months). Avoid freeze/thaw cycles.
<b>Shipping</b>	Ice bags
<b>Buffer</b>	50mM Tris-Glycine(pH 7.4), 0.15M NaCl, 40% Glycerol, 0.01% Sodium azide and 0.05% protective protein
<b>Purification</b>	Affinity Purification

**Application**

<b>Dilution Ratio</b>	WB 1:500-1:1000,IHC 1:50-1:100
<b>Molecular Weight</b>	Refer to figures

**Antigen Information**

<b>Gene Name</b>	SUMO1 SUMO1; SMT3C; SMT3H3; UBL1; OK/SW-cl.43; Small ubiquitin-related modifier 1; SUMO-1;
<b>Alternative Names</b>	GAP-modifying protein 1; GMP1; SMT3 homolog 3; Sentrin; Ubiquitin-homology domain protein PIC1; Ubiquitin-like protein SMT3C; Smt3C; Ubiquitin-like protein
<b>Gene ID</b>	7341
<b>SwissProt ID</b>	P63165
<b>Immunogen</b>	A synthetic peptide of human Sumo 1

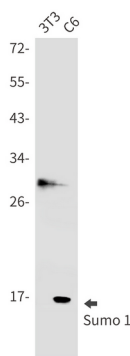
**Background**

SUMO1 Ubiquitin-like protein which can be covalently attached to target lysines as a monomer. Does not seem to be involved in protein degradation and may function as an antagonist of ubiquitin in the degradation process. Plays a role in a number of cellular processes such as nuclear transport, DNA replication and repair, mitosis and signal transduction.

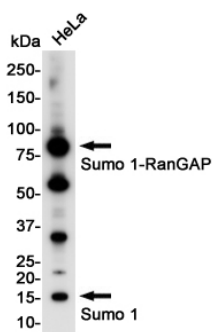
## Research Area

Cell Biology

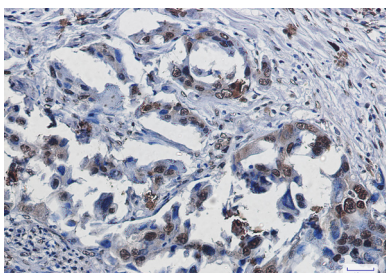
## Image Data



Western blot analysis of Sumo 1 in 3T3, C6 lysates using SUMO1 antibody.



Western blot analysis of Sumo 1 in HeLa lysates using Sumo 1 antibody.



Immunohistochemistry analysis of paraffin-embedded Human lung cancer using Sumo 1 antibody. High-pressure and temperature Sodium Citrate pH 6.0 was used for antigen retrieval.