

Product Name: STUB1 Rabbit Monoclonal Antibody**Catalog #: AMRe02648**

For research use only.

Summary

Description	Recombinant rabbit monoclonal antibody
Host	Rabbit
Application	WB, ICC/IF, IP
Reactivity	Human, Mouse, Rat
Conjugation	Unconjugated
Modification	Unmodified
Isotype	IgG
Clonality	Monoclonal
Form	Liquid
Concentration	0.68mg/ml. The concentration of this product may be batch-dependent.
Storage	Aliquot and store at -20°C (valid for 12 months). Avoid freeze/thaw cycles.
Shipping	Ice bags
Buffer	50mM Tris-Glycine(pH 7.4), 0.15M NaCl, 40% Glycerol, 0.01% Sodium azide and 0.05% protective protein
Purification	Affinity Purification

Application

Dilution Ratio	WB 1:500-1:1000, ICC/IF 1:50-1:200, IP 1:20-1:50
Molecular Weight	Calculated MW: 35 kDa; Observed MW: 35 kDa

Antigen Information

Gene Name	STUB1
Alternative Names	STUB1; CHIP; HSPABP2; NY-CO-7; SDCCAG7; UBOX1
Gene ID	10273
SwissProt ID	Q9UNE7
Immunogen	A synthetic peptide of human STUB1

Background

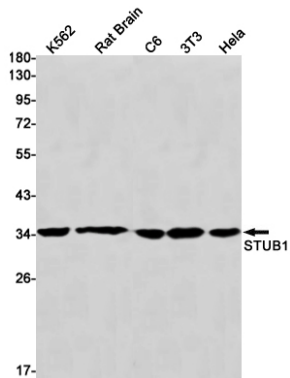
E3 ubiquitin-protein ligase which targets misfolded chaperone substrates towards proteasomal degradation. Ubiquitinates NOS1 in concert with Hsp70 and Hsp40. Modulates the activity of several chaperone complexes, including Hsp70, Hsc70 and

Hsp90.

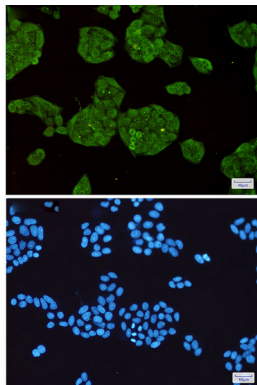
Research Area

Signal Transduction

Image Data



Western blot analysis of STUB1 in K562, rat Brain, C6, 3T3, HeLa lysates using STUB1 antibody.



Immunocytochemistry analysis of STUB1 (green) in HeLa using STUB1 antibody, and DAPI (blue)