
Product Name: SSX2IP Rabbit Monoclonal Antibody**Catalog #: AMRe02636**

For research use only.

Summary

Description	Recombinant rabbit monoclonal antibody
Host	Rabbit
Application	WB,IHC,ICC/IF
Reactivity	Human,Rat
Conjugation	Unconjugated
Modification	Unmodified
Isotype	IgG
Clonality	Monoclonal
Form	Liquid
Concentration	0.45mg/ml. The concentration of this product may be batch-dependent.
Storage	Aliquot and store at -20°C (valid for 12 months). Avoid freeze/thaw cycles.
Shipping	Ice bags
Buffer	50mM Tris-Glycine(pH 7.4), 0.15M NaCl, 40% Glycerol, 0.01% Sodium azide and 0.05% protective protein
Purification	Affinity Purification

Application

Dilution Ratio	WB 1:500-1:1000,IHC 1:50-1:100,ICC/IF 1:50-1:200
Molecular Weight	Calculated MW: 71 kDa; Observed MW: 71 kDa

Antigen Information

Gene Name	SSX2IP
Alternative Names	ADIP; hMsd1
Gene ID	117178
SwissProt ID	Q9Y2D8
Immunogen	A synthetic peptide of human SSX2IP

Background

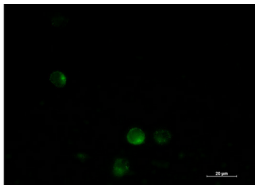
Belongs to an adhesion system, which plays a role in the organization of homotypic, interneuronal and heterotypic cell-cell adherens junctions (AJs). May connect the nectin-afadin and E-cadherin-catenin system through alpha-actinin and may be

involved in organization of the actin cytoskeleton at AJs through afadin and alpha-actinin . Involved in cell movement: localizes at the leading edge of moving cells in response to PDGF and is required for the formation of the leading edge and the promotion of cell movement, possibly via activation of Rac signaling . Acts as a centrosome maturation factor, probably by maintaining the integrity of the pericentriolar material and proper microtubule nucleation at mitotic spindle poles. The function seems to implicate at least in part WRAP73; the SSX2IP:WRAP73 complex is proposed to act as regulator of spindle anchoring at the mitotic centrosome (PubMed:23816619, PubMed:26545777). Involved in ciliogenesis (PubMed:24356449). It is required for targeted recruitment of the BBSome, CEP290, RAB8, and SSTR3 to the cilia (PubMed:24356449).

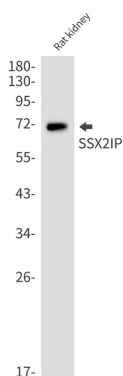
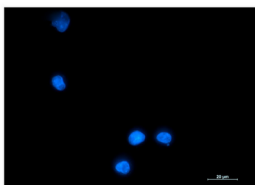
Research Area

Tags & Cell Markers

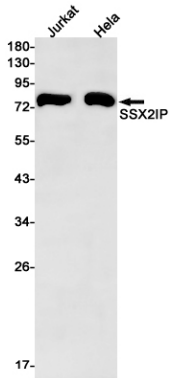
Image Data



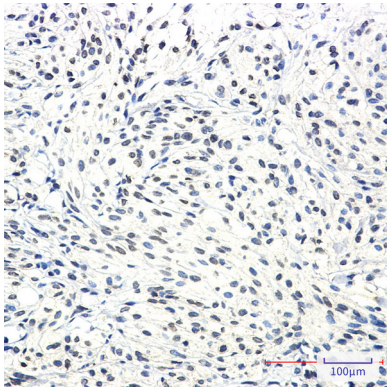
Immunocytochemistry analysis of SSX2IP (green) in K562 using SSX2IP antibody, and DAPI(blue).



Western blot analysis of SSX2IP in rat kidney lysates using SSX2IP antibody.



Western blot analysis of SSX2IP in Jurkat, HeLa lysates using SSX2IP antibody



Immunohistochemistry analysis of paraffin-embedded Human Brain using SSX2IP antibody. High-pressure and temperature Sodium Citrate pH 6.0 was used for antigen retrieval.