
Product Name: SRP72 Rabbit Monoclonal Antibody**Catalog #: AMRe02635**

For research use only.

Summary

Description	Recombinant rabbit monoclonal antibody
Host	Rabbit
Application	WB,IHC,ICC/IF
Reactivity	Human
Conjugation	Unconjugated
Modification	Unmodified
Isotype	IgG
Clonality	Monoclonal
Form	Liquid
Concentration	0.3mg/ml. The concentration of this product may be batch-dependent.
Storage	Aliquot and store at -20°C (valid for 12 months). Avoid freeze/thaw cycles.
Shipping	Ice bags
Buffer	50mM Tris-Glycine(pH 7.4), 0.15M NaCl, 40% Glycerol, 0.01% Sodium azide and 0.05% protective protein
Purification	Affinity Purification

Application

Dilution Ratio	WB 1:500-1:1000,IHC 1:50-1:100,ICC/IF 1:50-1:200
Molecular Weight	Calculated MW: 75 kDa; Observed MW: 75 kDa

Antigen Information

Gene Name	SRP72
Alternative Names	BMFF; BMFS1; HEL103
Gene ID	6731
SwissProt ID	O76094
Immunogen	A synthetic peptide of human SRP72

Background

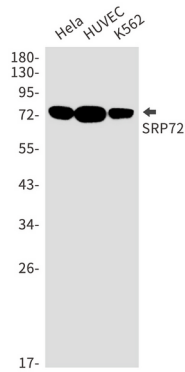
Signal-recognition-particle assembly has a crucial role in targeting secretory proteins to the rough endoplasmic reticulum membrane. Binds the 7S RNA only in presence of SRP68. This ribonucleoprotein complex might interact directly with the

docking protein in the ER membrane and possibly participate in the elongation arrest function.

Research Area

Epigenetics and Nuclear Signaling

Image Data



Western blot analysis of SRP72 in HeLa, HUVEC, K562 lysates using SRP72 antibody.