
Product Name: SPON2 Rabbit Monoclonal Antibody**Catalog #: AMRe02632**

For research use only.

Summary

Description	Recombinant rabbit monoclonal antibody
Host	Rabbit
Application	WB
Reactivity	Human, Mouse, Rat
Conjugation	Unconjugated
Modification	Unmodified
Isotype	IgG
Clonality	Monoclonal
Form	Liquid
Concentration	0.5mg/ml. The concentration of this product may be batch-dependent.
Storage	Aliquot and store at -20°C (valid for 12 months). Avoid freeze/thaw cycles.
Shipping	Ice bags
Buffer	50mM Tris-Glycine(pH 7.4), 0.15M NaCl, 40% Glycerol, 0.01% Sodium azide and 0.05% protective protein
Purification	Affinity Purification

Application

Dilution Ratio	WB 1:500-1:1000
Molecular Weight	Calculated MW: 36 kDa; Observed MW: 36 kDa

Antigen Information

Gene Name	SPON2
Alternative Names	DIL1; DIL-1; MINDIN; M-SPONDIN
Gene ID	10417
SwissProt ID	Q9BUD6
Immunogen	A synthetic peptide of human SPON2

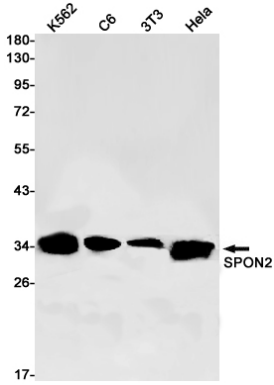
Background

Cell adhesion protein that promotes adhesion and outgrowth of hippocampal embryonic neurons.

Research Area

Neuroscience

Image Data



Western blot analysis of SPON2 in K562, C6, 3T3, HeLa lysates using SPON2 antibody.