
Product Name: SP1 Rabbit Monoclonal Antibody**Catalog #: AMRe02628**

For research use only.

Summary

Description	Recombinant rabbit monoclonal antibody
Host	Rabbit
Application	WB,IHC,ICC/IF
Reactivity	Human,Mouse
Conjugation	Unconjugated
Modification	Unmodified
Isotype	IgG
Clonality	Monoclonal
Form	Liquid
Concentration	0.54mg/ml. The concentration of this product may be batch-dependent.
Storage	Aliquot and store at -20°C (valid for 12 months). Avoid freeze/thaw cycles.
Shipping	Ice bags
Buffer	50mM Tris-Glycine(pH 7.4), 0.15M NaCl, 40% Glycerol, 0.01% Sodium azide and 0.05% protective protein
Purification	Affinity Purification

Application

Dilution Ratio	WB 1:500-1:1000,IHC 1:50-1:100,ICC/IF 1:50-1:200
Molecular Weight	Calculated MW: 81 kDa; Observed MW: 90 kDa

Antigen Information

Gene Name	SP1
Alternative Names	SP1; TSFP1; Transcription factor Sp1
Gene ID	6667
SwissProt ID	P08047
Immunogen	Recombinant protein of human SP1

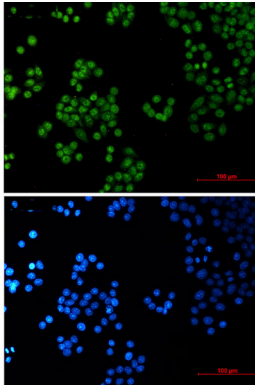
Background

SP1 is a transcription factor of the Sp1 C2H2-type zinc-finger protein family. Phosphorylated and activated by MAPK. Dephosphorylation by PTEN inhibits DNA binding. Binds to p38 in the nucleus.

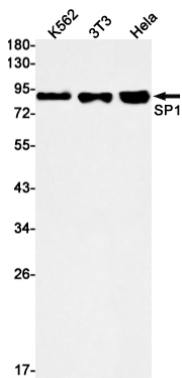
Research Area

Epigenetics and Nuclear Signaling

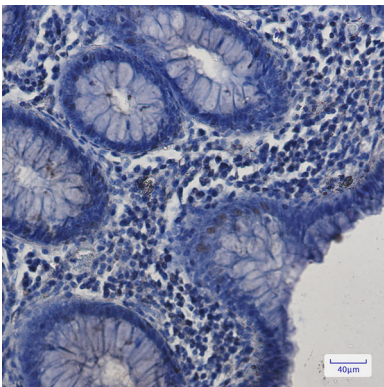
Image Data



Immunocytochemistry analysis of SP1 (green) in HeLa using SP1 antibody, and DAPI (blue).



Western blot analysis of SP1 in K562, 3T3, HeLa lysates using SP1 antibody.



Immunohistochemistry analysis of paraffin-embedded Human colon cancer tissue using SP1 antibody. High-pressure and temperature Sodium Citrate pH 6.0 was used for antigen retrieval.