

Product Name: Sonic Hedgehog Rabbit Monoclonal Antibody**Catalog #: AMRe02627**

For research use only.

Summary

Description	Recombinant rabbit monoclonal antibody
Host	Rabbit
Application	WB,IHC,ICC/IF
Reactivity	Human,Mouse
Conjugation	Unconjugated
Modification	Unmodified
Isotype	IgG
Clonality	Monoclonal
Form	Liquid
Concentration	0.5mg/ml. The concentration of this product may be batch-dependent.
Storage	Aliquot and store at -20°C (valid for 12 months). Avoid freeze/thaw cycles.
Shipping	Ice bags
Buffer	50mM Tris-Glycine(pH 7.4), 0.15M NaCl, 40% Glycerol, 0.01% Sodium azide and 0.05% protective protein
Purification	Affinity Purification

Application

Dilution Ratio	WB 1:500-1:1000,IHC 1:50-1:100,ICC/IF 1:50-1:200
Molecular Weight	Calculated MW: 50 kDa; Observed MW: 50,27 kDa

Antigen Information

Gene Name	SHH
Alternative Names	Sonic hedgehog protein; SHH; HHG-1; Sonic hedgehog protein N-product; Sonic hedgehog protein C-product
Gene ID	6469
SwissProt ID	Q15465
Immunogen	A synthetic peptide of human Sonic Hedgehog

Background

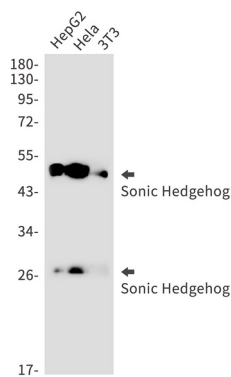
This gene encodes a protein that is instrumental in patterning the early embryo. It has been implicated as the key inductive

signal in patterning of the ventral neural tube, the anterior-posterior limb axis, and the ventral somites. Of three human proteins showing sequence and functional similarity to the sonic hedgehog protein of *Drosophila*, this protein is the most similar.

Research Area

Epigenetics and Nuclear Signaling

Image Data



Western blot analysis of Sonic Hedgehog in HepG2, Hela, 3T3 lysates using Sonic Hedgehog antibody.