

Product Name: SIRP alpha Rabbit Monoclonal Antibody
Catalog #: AMRe02601



Summary

Production Name	SIRP alpha Rabbit Monoclonal Antibody
Description	Rabbit Monoclonal antibody
Host	Rabbit
Application	WB
Reactivity	Mouse,Rat

Performance

Conjugation	Unconjugated
Modification	Unmodified
Isotype	IgG
Clonality	Monoclonal
Form	Liquid
Storage	Store at 4°C short term. Aliquot and store at -20°C long term. Avoid freeze/thaw cycles.
Buffer	50mM Tris-Glycine(pH 7.4), 0.15M NaCl, 40% Glycerol, 0.01% Sodium azide and 0.05% protective protein
Purification	Affinity Purification

Immunogen

Gene Name	SIRPA
Alternative Names	SIRPA; BIT; MFR; MYD1; PTPNS1; SHPS1; SIRP; Tyrosine-protein phosphatase non-receptor type substrate 1; SHP substrate 1; SHPS-1; Brain Ig-like molecule with tyrosine-based activation motifs; Bit; CD172 antigen-like family member A; Inhibito
Gene ID	140885
SwissProt ID	P78324.

Application

Dilution Ratio	WB: 1:500-1:1000
Molecular Weight	Calculated MW: 55 kDa; Observed MW: 85 kDa

Product Name: SIRP alpha Rabbit Monoclonal Antibody
Catalog #: AMRe02601



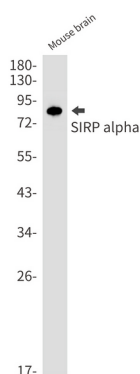
Background

Immunoglobulin-like cell surface receptor for CD47. Acts as docking protein and induces translocation of PTPN6, PTPN11 and other binding partners from the cytosol to the plasma membrane. Supports adhesion of cerebellar neurons, neurite outgrowth and glial cell attachment.

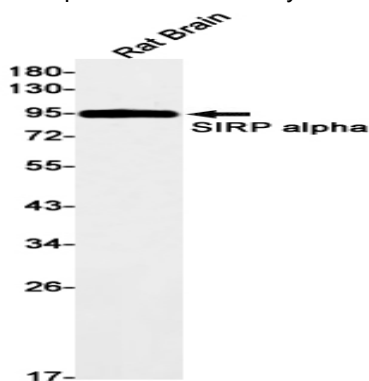
Research Area

Neuroscience

Image Data



Western blot analysis of SIRP alpha in mouse brain lysates using SIRP alpha antibody.



Western blot analysis of SIRP alpha in rat Brain lysates using SIRP alpha antibody.

Note

For research use only.