

Product Name: SGSM1 Rabbit Monoclonal Antibody**Catalog #: AMRe02595**

For research use only.

Summary

Description	Recombinant rabbit monoclonal antibody
Host	Rabbit
Application	WB, ICC/IF
Reactivity	Human
Conjugation	Unconjugated
Modification	Unmodified
Isotype	IgG
Clonality	Monoclonal
Form	Liquid
Concentration	0.68mg/ml. The concentration of this product may be batch-dependent.
Storage	Aliquot and store at -20°C (valid for 12 months). Avoid freeze/thaw cycles.
Shipping	Ice bags
Buffer	50mM Tris-Glycine(pH 7.4), 0.15M NaCl, 40% Glycerol, 0.01% Sodium azide and 0.05% protective protein
Purification	Affinity Purification

Application

Dilution Ratio	WB 1:500-1:1000, ICC/IF 1:50-1:200
Molecular Weight	Calculated MW: 130 kDa; Observed MW: 130 kDa

Antigen Information

Gene Name	SGSM1
Alternative Names	RUTBC2
Gene ID	129049
SwissProt ID	Q2NKQ1
Immunogen	A synthetic peptide of human SGSM1

Background

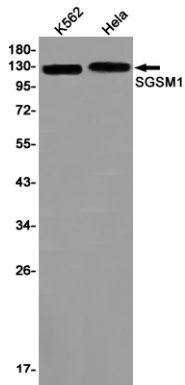
Interacts with numerous Rab family members, functioning as Rab effector for some, and as GTPase activator for others. Promotes GTP hydrolysis by RAB34 and RAB36. Probably functions as GTPase effector with RAB9A and RAB9B; does not

stimulate GTP hydrolysis with RAB9A and RAB9B.

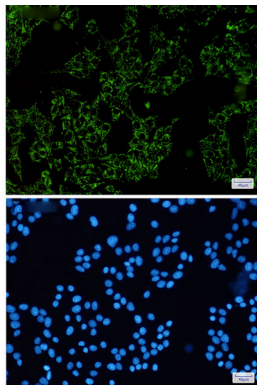
Research Area

Signal Transduction

Image Data



Western blot analysis of SGSM1 in K562, HeLa lysates using SGSM1 antibody.



Immunocytochemistry analysis of SGSM1 (green) in HeLa using SGSM1 antibody, and DAPI (blue)