

Product Name: SFPQ Rabbit Monoclonal Antibody**Catalog #: AMRe02593**

For research use only.

Summary

Description	Recombinant rabbit monoclonal antibody
Host	Rabbit
Application	WB,IHC,ICC/IF
Reactivity	Human,Mouse,Rat
Conjugation	Unconjugated
Modification	Unmodified
Isotype	IgG
Clonality	Monoclonal
Form	Liquid
Concentration	0.54mg/ml. The concentration of this product may be batch-dependent.
Storage	Aliquot and store at -20°C (valid for 12 months). Avoid freeze/thaw cycles.
Shipping	Ice bags
Buffer	50mM Tris-Glycine(pH 7.4), 0.15M NaCl, 40% Glycerol, 0.01% Sodium azide and 0.05% protective protein
Purification	Affinity Purification

Application

Dilution Ratio	WB 1:500-1:1000,IHC 1:50-1:100,ICC/IF 1:50-1:200
Molecular Weight	Calculated MW: 76 kDa; Observed MW: 100 kDa

Antigen Information

Gene Name	SFPQ
Alternative Names	PSF; POMP100; PPP1R140
Gene ID	6421
SwissProt ID	P23246
Immunogen	A synthetic peptide of human SFPQ

Background

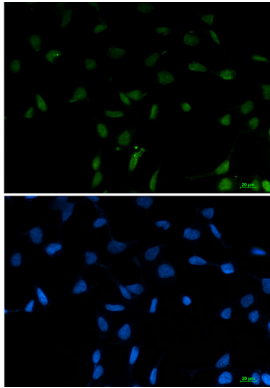
DNA- and RNA binding protein, involved in several nuclear processes. Essential pre-mRNA splicing factor required early in spliceosome formation and for splicing catalytic step II, probably as a heteromer with NONO. Binds to pre-mRNA in

spliceosome C complex, and specifically binds to intronic polypyrimidine tracts.

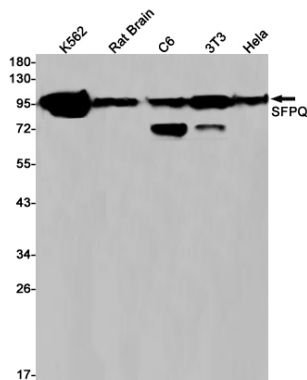
Research Area

Epigenetics and Nuclear Signaling

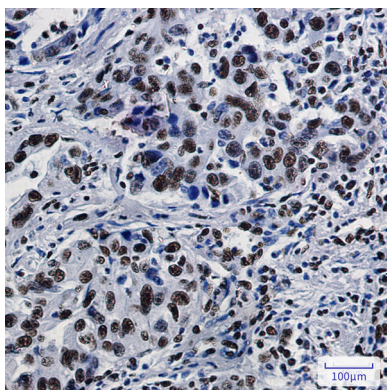
Image Data



Immunocytochemistry analysis of SFPQ (green) in 293T using SFPQ antibody, and DAPI (blue).



Western blot analysis of SFPQ in K562, rat Brain, C6, 3T3, HeLa lysates using SFPQ antibody.



Immunohistochemistry analysis of paraffin-embedded Human lung cancer tissue using SFPQ antibody. High-pressure and temperature Sodium Citrate pH 6.0 was used for antigen retrieval.