

Product Name: SF2 Rabbit Monoclonal antibody**Catalog #: AMRe02591**

For research use only.

Summary

Description	Recombinant rabbit monoclonal antibody
Host	Rabbit
Application	WB,IHC,ICC/IF
Reactivity	Human,Mouse,Rat
Conjugation	Unconjugated
Modification	Unmodified
Isotype	IgG
Clonality	Monoclonal Antibody
Form	Liquid
Concentration	0.16mg/ml. The concentration of this product may be batch-dependent.
Storage	Aliquot and store at -20°C (valid for 12 months). Avoid freeze/thaw cycles.
Shipping	Ice bags
Buffer	50mM Tris-Glycine(pH 7.4), 0.15M NaCl, 40% Glycerol, 0.01% Sodium azide and 0.05% protective protein
Purification	Affinity Purified

Application

Dilution Ratio	WB 1:500-1:1000,IHC 1:50-1:100,ICC/IF 1:50-1:200
Molecular Weight	Calculated MW: 28 kDa; Observed MW: 28 kDa

Antigen Information

Gene Name	SRSF1
Alternative Names	ASF; SF2; SFRS1; SF2p33; SRp30a
Gene ID	6426
SwissProt ID	Q07955
Immunogen	A synthetic peptide of human SF2

Background

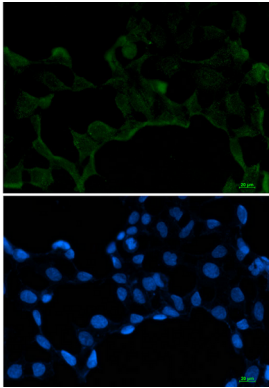
Plays a role in preventing exon skipping, ensuring the accuracy of splicing and regulating alternative splicing. Interacts with other spliceosomal components, via the RS domains, to form a bridge between the 5'- and 3'-splice site binding components,

U1 snRNP and U2AF.

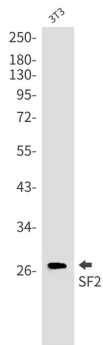
Research Area

Epigenetics and Nuclear Signaling

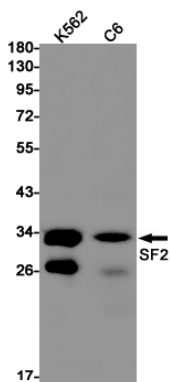
Image Data



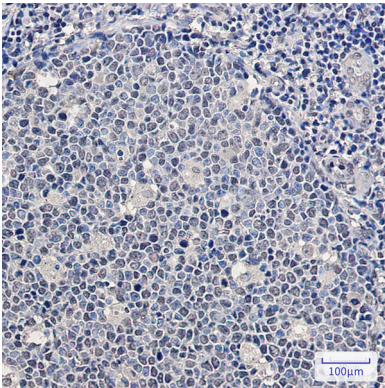
Immunocytochemistry analysis of SF2 (green) in 293T using SF2 antibody, and DAPI (blue).



Western blot analysis of SF2 in 3T3 lysates using SF2 antibody.



Western blot analysis of SF2 in K562, C6 lysates using SF2 antibody



Immunohistochemistry analysis of paraffin-embedded Human tonsil using SF2 antibody. High-pressure and temperature Sodium Citrate pH 6.0 was used for antigen retrieval.