

**Product Name: SEP15 Rabbit Monoclonal Antibody****Catalog #: AMRe02586**

For research use only.

**Summary**

<b>Description</b>	Recombinant rabbit monoclonal antibody
<b>Host</b>	Rabbit
<b>Application</b>	WB
<b>Reactivity</b>	Human
<b>Conjugation</b>	Unconjugated
<b>Modification</b>	Unmodified
<b>Isotype</b>	IgG
<b>Clonality</b>	Monoclonal
<b>Form</b>	Liquid
<b>Concentration</b>	0.5mg/ml. The concentration of this product may be batch-dependent.
<b>Storage</b>	Aliquot and store at -20°C (valid for 12 months). Avoid freeze/thaw cycles.
<b>Shipping</b>	Ice bags
<b>Buffer</b>	50mM Tris-Glycine(pH 7.4), 0.15M NaCl, 40% Glycerol, 0.01% Sodium azide and 0.05% protective protein
<b>Purification</b>	Affinity Purification

**Application**

<b>Dilution Ratio</b>	WB 1:500-1:1000
<b>Molecular Weight</b>	Calculated MW: 18 kDa; Observed MW: 18 kDa

**Antigen Information**

<b>Gene Name</b>	Selenof
<b>Alternative Names</b>	Sep15; 9430015P09Rik
<b>Gene ID</b>	93684.0
<b>SwissProt ID</b>	Q9ERR7
<b>Immunogen</b>	A synthetic peptide of mouse SEP15

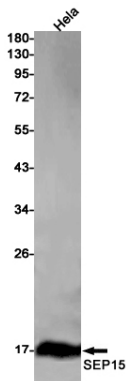
**Background**

May be involved in redox reactions associated with the formation of disulfide bonds. May contribute to the quality control of protein folding in the endoplasmic reticulum .

## Research Area

Cell Biology

## Image Data



Western blot analysis of 44089 in HeLa lysates using SEP15 antibody.