

Product Name: SEH1L Rabbit Monoclonal Antibody**Catalog #: AMRe02584**

For research use only.

Summary

Description	Recombinant rabbit monoclonal antibody
Host	Rabbit
Application	WB,IP
Reactivity	Human,Mouse,Rat
Conjugation	Unconjugated
Modification	Unmodified
Isotype	IgG
Clonality	Monoclonal
Form	Liquid
Concentration	0.5mg/ml. The concentration of this product may be batch-dependent.
Storage	Aliquot and store at -20°C (valid for 12 months). Avoid freeze/thaw cycles.
Shipping	Ice bags
Buffer	50mM Tris-Glycine(pH 7.4), 0.15M NaCl, 40% Glycerol, 0.01% Sodium azide and 0.05% protective protein
Purification	Affinity Purification

Application

Dilution Ratio	WB 1:500-1:1000,IP 1:20-1:50
Molecular Weight	Calculated MW: 40 kDa; Observed MW: 40 kDa

Antigen Information

Gene Name	Seh1L
Alternative Names	GATOR complex protein SEH1; Nup107-160 subcomplex subunit SEH1
Gene ID	72124.0
SwissProt ID	Q8R2U0
Immunogen	A synthetic peptide of human SEH1L

Background

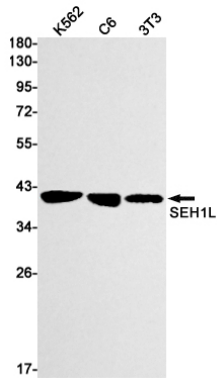
Component of the Nup107-160 subcomplex of the nuclear pore complex (NPC). The Nup107-160 subcomplex is required for the assembly of a functional NPC. The Nup107-160 subcomplex is also required for normal kinetochore microtubule

attachment, mitotic progression and chromosome segregation. This subunit plays a role in recruitment of the Nup107-160 subcomplex to the kinetochore.

Research Area

Epigenetics and Nuclear Signaling

Image Data



Western blot analysis of SEH1L in K562, C6, 3T3 lysates using SEH1L antibody.