

---

**Product Name: Secretory Phospholipase A2 Rabbit Monoclonal antibody****Catalog #: AMRe02582**

For research use only.

**Summary**

<b>Description</b>	Recombinant rabbit monoclonal antibody
<b>Host</b>	Rabbit
<b>Application</b>	WB
<b>Reactivity</b>	Human, Mouse, Rat
<b>Conjugation</b>	Unconjugated
<b>Modification</b>	Unmodified
<b>Isotype</b>	IgG
<b>Clonality</b>	Monoclonal Antibody
<b>Form</b>	Liquid
<b>Concentration</b>	0.5mg/ml. The concentration of this product may be batch-dependent.
<b>Storage</b>	Aliquot and store at -20°C (valid for 12 months). Avoid freeze/thaw cycles.
<b>Shipping</b>	Ice bags
<b>Buffer</b>	50mM Tris-Glycine(pH 7.4), 0.15M NaCl, 40% Glycerol, 0.01% Sodium azide and 0.05% protective protein
<b>Purification</b>	Affinity Purified

**Application**

<b>Dilution Ratio</b>	WB 1:500-1:1000
<b>Molecular Weight</b>	Calculated MW: 16 kDa; Observed MW: 16 kDa

**Antigen Information**

<b>Gene Name</b>	PLA2G2A
<b>Alternative Names</b>	MOM1; PLA2; PLA2B; PLA2L; PLA2S; PLAS1; sPLA2
<b>Gene ID</b>	5320
<b>SwissProt ID</b>	P14555
<b>Immunogen</b>	A synthetic peptide corresponding to target protein

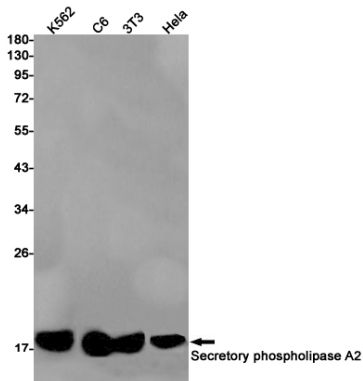
**Background**

Thought to participate in the regulation of the phospholipid metabolism in biomembranes including eicosanoid biosynthesis. Catalyzes the calcium-dependent hydrolysis of the 2-acyl groups in 3-sn-phosphoglycerides.

## Research Area

Signal Transduction

## Image Data



Western blot analysis of Secretory Phospho-lipase A2 in K562, C6, 3T3, HeLa lysates using Secretory Phospho-lipase A2 antibody.