
Product Name: SEC61A Rabbit Monoclonal antibody**Catalog #: AMRe02581**

For research use only.

Summary

| | |
|----------------------|--|
| Description | Recombinant rabbit monoclonal antibody |
| Host | Rabbit |
| Application | WB,IHC,ICC/IF,IP |
| Reactivity | Human,Mouse,Rat |
| Conjugation | Unconjugated |
| Modification | Unmodified |
| Isotype | IgG |
| Clonality | Monoclonal Antibody |
| Form | Liquid |
| Concentration | 0.8mg/ml. The concentration of this product may be batch-dependent. |
| Storage | Aliquot and store at -20°C (valid for 12 months). Avoid freeze/thaw cycles. |
| Shipping | Ice bags |
| Buffer | 50mM Tris-Glycine(pH 7.4), 0.15M NaCl, 40% Glycerol, 0.01% Sodium azide and 0.05% protective protein |
| Purification | Affinity Purified |

Application

| | |
|-------------------------|---|
| Dilution Ratio | WB 1:500-1:1000,IHC 1:50-1:100,ICC/IF 1:50-1:200,IP 1:20-1:50 |
| Molecular Weight | Calculated MW: 52 kDa; Observed MW: 40 kDa |

Antigen Information

| | |
|--------------------------|---|
| Gene Name | SEC61A2 |
| Alternative Names | SEC61A2, Sec61 alpha-2, Protein transport protein Sec61 subunit alpha isoform 2 |
| Gene ID | 55176 |
| SwissProt ID | Q9H9S3 |
| Immunogen | Recombinant protein of human SEC61A |

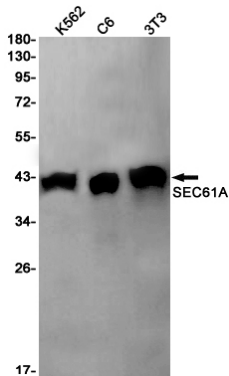
Background

Plays a crucial role in the insertion of secretory and membrane polypeptides into the ER. Required for assembly of membrane and secretory proteins. Tightly associated with membrane-bound ribosomes, either directly or through adapter proteins.

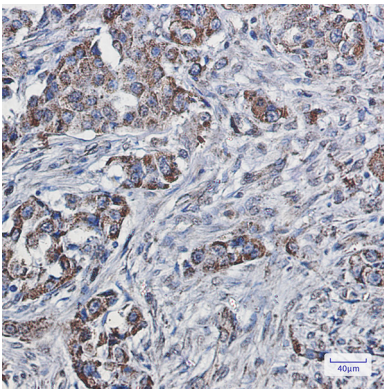
Research Area

Signal Transduction

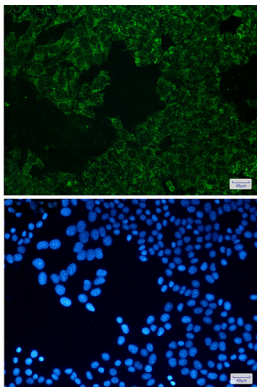
Image Data



Western blot analysis of SEC61A in K562, C6, 3T3 lysates using SEC61A antibody.



Immunohistochemistry analysis of paraffin-embedded Human lung cancer using SEC61A antibody. High-pressure and temperature Sodium Citrate pH 6.0 was used for antigen retrieval.



Immunocytochemistry analysis of SEC61A (green) in HeLa using SEC61A antibody, and DAPI (blue)