

Product Name: SCD1 Rabbit Monoclonal antibody**Catalog #: AMRe02577**

For research use only.

Summary

Description	Recombinant rabbit monoclonal antibody
Host	Rabbit
Application	WB,IHC,ICC/IF,IP
Reactivity	Human
Conjugation	Unconjugated
Modification	Unmodified
Isotype	IgG
Clonality	Monoclonal Antibody
Form	Liquid
Concentration	0.8mg/ml. The concentration of this product may be batch-dependent.
Storage	Aliquot and store at -20°C (valid for 12 months). Avoid freeze/thaw cycles.
Shipping	Ice bags
Buffer	50mM Tris-Glycine(pH 7.4), 0.15M NaCl, 40% Glycerol, 0.01% Sodium azide and 0.05% protective protein
Purification	Affinity Purified

Application

Dilution Ratio	WB 1:500-1:1000,IHC 1:50-1:100,ICC/IF 1:50-1:200,IP 1:20-1:50
Molecular Weight	Calculated MW: 42 kDa; Observed MW: 37 kDa

Antigen Information

Gene Name	SCD
Alternative Names	SCD1; FADS5; SCDOS; MSTP008
Gene ID	6319
SwissProt ID	O00767
Immunogen	Recombinant protein of human SCD1

Background

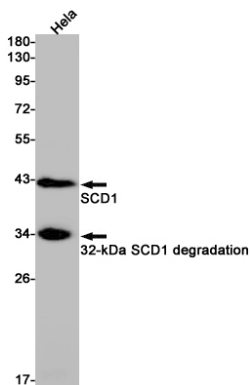
Stearyl-CoA desaturase that utilizes O₂ and electrons from reduced cytochrome b₅ to introduce the first double bond into saturated fatty acyl-CoA substrates (PubMed:15907797, PubMed:18765284). Catalyzes the insertion of a cis double bond at the

delta-9 position into fatty acyl-CoA substrates including palmitoyl-CoA and stearoyl-CoA (PubMed:15907797, PubMed:18765284). Gives rise to a mixture of 16:1 and 18:1 unsaturated fatty acids (PubMed:15610069). Plays an important role in lipid biosynthesis. Plays an important role in regulating the expression of genes that are involved in lipogenesis and in regulating mitochondrial fatty acid oxidation . Plays an important role in body energy homeostasis . Contributes to the biosynthesis of membrane phospholipids, cholesterol esters and triglycerides .

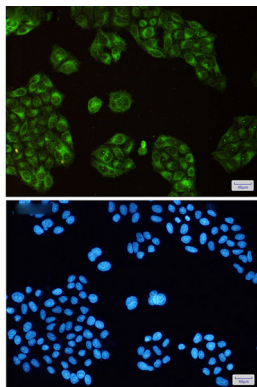
Research Area

Signal Transduction

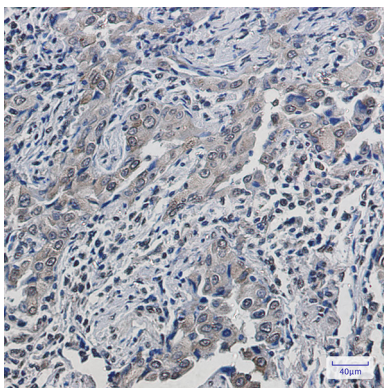
Image Data



Western blot analysis of SCD1 in HeLa lysates using SCD1 antibody.



Immunocytochemistry analysis of SCD1 (green) in HeLa using SCD1 antibody, and DAPI (blue)



Immunohistochemistry analysis of paraffin-embedded Human lung cancer using SCD1 antibody. High-pressure and temperature Sodium Citrate pH 6.0 was used for antigen retrieval.