

Product Name: SC35 Rabbit Monoclonal Antibody**Catalog #: AMRe02573**

For research use only.

Summary

Description	Recombinant rabbit monoclonal antibody
Host	Rabbit
Application	WB,IHC,IP
Reactivity	Human,Rat
Conjugation	Unconjugated
Modification	Unmodified
Isotype	IgG
Clonality	Monoclonal
Form	Liquid
Concentration	0.68mg/ml. The concentration of this product may be batch-dependent.
Storage	Aliquot and store at -20°C (valid for 12 months). Avoid freeze/thaw cycles.
Shipping	Ice bags
Buffer	50mM Tris-Glycine(pH 7.4), 0.15M NaCl, 40% Glycerol, 0.01% Sodium azide and 0.05% protective protein
Purification	Affinity Purification

Application

Dilution Ratio	WB 1:500-1:1000,IHC 1:50-1:100,IP 1:20-1:50
Molecular Weight	Calculated MW: 25 kDa; Observed MW: 35 kDa

Antigen Information

Gene Name	SRSF2
Alternative Names	Protein PR264; Splicing component; 35 kDa; Splicing factor SC35; SC-35; Splicing factor; arginine/serine-rich 2
Gene ID	6427
SwissProt ID	Q01130
Immunogen	A synthetic peptide of human SC35

Background

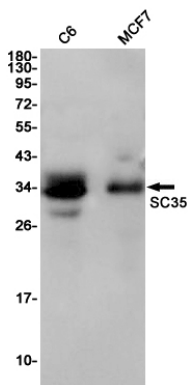
Necessary for the splicing of pre-mRNA. It is required for formation of the earliest ATP-dependent splicing complex and

interacts with spliceosomal components bound to both the 5'- and 3'-splice sites during spliceosome assembly. It also is required for ATP-dependent interactions of both U1 and U2 snRNPs with pre-mRNA. Interacts with other spliceosomal components, via the RS domains, to form a bridge between the 5'- and 3'-splice site binding components, U1 snRNP and U2AF. Binds to purine-rich RNA sequences, either 5'-AGSAGAGTA-3' (S=C or G) or 5'-GTTCGAGTA-3'. Can bind to beta-globin mRNA and commit it to the splicing pathway. The phosphorylated form (by SRPK2) is required for cellular apoptosis in response to cisplatin treatment.

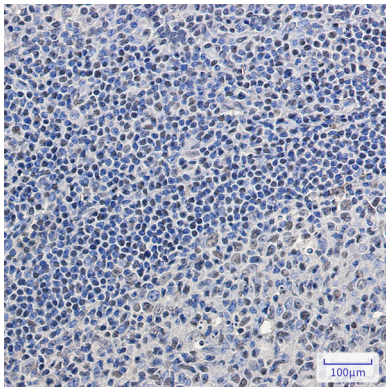
Research Area

Epigenetics and Nuclear Signaling

Image Data



Western blot analysis of SC35 in C6, MCF-7 lysates using SC35 antibody.



Immunohistochemistry analysis of paraffin-embedded Human tonsil using SC35 antibody. High-pressure and temperature Sodium Citrate pH 6.0 was used for antigen retrieval.