

---

**Product Name: Sarcomeric alpha Actinin Rabbit Monoclonal Antibody****Catalog #: AMRe02572**

For research use only.

**Summary**

<b>Description</b>	Recombinant rabbit monoclonal antibody
<b>Host</b>	Rabbit
<b>Application</b>	WB,IHC,IP
<b>Reactivity</b>	Human,Mouse,Rat
<b>Conjugation</b>	Unconjugated
<b>Modification</b>	Unmodified
<b>Isotype</b>	IgG
<b>Clonality</b>	Monoclonal
<b>Form</b>	Liquid
<b>Concentration</b>	0.54mg/ml. The concentration of this product may be batch-dependent.
<b>Storage</b>	Aliquot and store at -20°C (valid for 12 months). Avoid freeze/thaw cycles.
<b>Shipping</b>	Ice bags
<b>Buffer</b>	50mM Tris-Glycine(pH 7.4), 0.15M NaCl, 40% Glycerol, 0.01% Sodium azide and 0.05% protective protein
<b>Purification</b>	Affinity Purification

**Application**

<b>Dilution Ratio</b>	WB 1:500-1:1000,IHC 1:50-1:100,IP 1:20-1:50
<b>Molecular Weight</b>	Calculated MW: 104 kDa; Observed MW: 104 kDa

**Antigen Information**

<b>Gene Name</b>	ACTN2
<b>Alternative Names</b>	Actin binding protein; Actinin alpha 2; ACTN2; Alpha actinin 2; CMD1AA
<b>Gene ID</b>	88
<b>SwissProt ID</b>	P35609
<b>Immunogen</b>	A synthetic peptide of human Sarcomeric Alpha Actinin

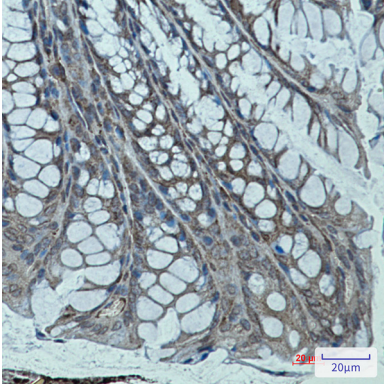
**Background**

F-actin cross-linking protein which is thought to anchor actin to a variety of intracellular structures. This is a bundling protein.

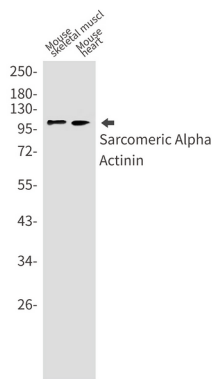
## Research Area

Signal Transduction

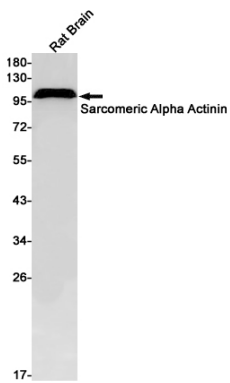
## Image Data



Immunohistochemistry analysis of paraffin-embedded mouse colon using Sarcomeric alpha Actinin antibody. High-pressure and temperature Sodium Citrate pH 6.0 was used for antigen retrieval.



Western blot analysis of Sarcomeric Alpha Actinin in mouse skeletal muscle, mouse heart lysates using Sarcomeric Alpha Actinin antibody.



Western blot analysis of Sarcomeric Alpha Actinin in rat Brain lysates using Sarcomeric Alpha Actinin antibody.