

Product Name: SAE1 Rabbit Monoclonal Antibody**Catalog #: AMRe02568**

For research use only.

Summary

| | |
|----------------------|--|
| Description | Recombinant rabbit monoclonal antibody |
| Host | Rabbit |
| Application | WB, ICC/IF |
| Reactivity | Human |
| Conjugation | Unconjugated |
| Modification | Unmodified |
| Isotype | IgG |
| Clonality | Monoclonal |
| Form | Liquid |
| Concentration | 0.68mg/ml. The concentration of this product may be batch-dependent. |
| Storage | Aliquot and store at -20°C (valid for 12 months). Avoid freeze/thaw cycles. |
| Shipping | Ice bags |
| Buffer | 50mM Tris-Glycine(pH 7.4), 0.15M NaCl, 40% Glycerol, 0.01% Sodium azide and 0.05% protective protein |
| Purification | Affinity Purification |

Application

| | |
|-------------------------|--|
| Dilution Ratio | WB 1:500-1:1000, ICC/IF 1:50-1:200 |
| Molecular Weight | Calculated MW: 38 kDa; Observed MW: 38 kDa |

Antigen Information

| | |
|--------------------------|--|
| Gene Name | SAE1 |
| Alternative Names | SAE1; AOS1; SUA1; UBLE1A; SUMO-activating enzyme subunit 1; Ubiquitin-like 1-activating enzyme E1A |
| Gene ID | 10055 |
| SwissProt ID | Q9UBE0 |
| Immunogen | A synthetic peptide of human SAE1 |

Background

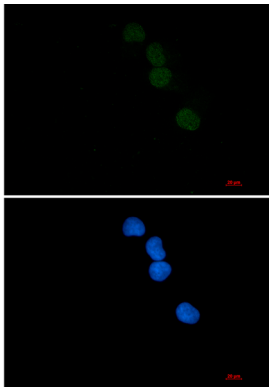
The heterodimer acts as a E1 ligase for SUMO1, SUMO2, SUMO3, and probably SUMO4. It mediates ATP-dependent activation

of SUMO proteins followed by formation of a thioester bond between a SUMO protein and a conserved active site cysteine residue on UBA2/SAE2.

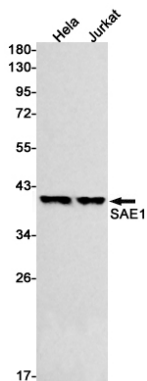
Research Area

Cell Biology

Image Data



Immunocytochemistry analysis of SAE1 (green) in HeLa using SAE1 antibody, and DAPI (blue).



Western blot analysis of SAE1 in HeLa, Jurkat lysates using SAE1 antibody.